

A8510

Leader in Biomolecular Solutions for Life Science



VEPH1 Rabbit pAb

Catalog No.: A8510

1 Publications

Basic Information

Observed MW

105kDa

Calculated MW

95kDa

Category

Polyclonal Antibody

Applications

WB,ELISA

Cross-Reactivity

Human,Mouse

Background

Predicted to enable phosphatidylinositol-5-phosphate binding activity. Involved in negative regulation of SMAD protein signal transduction and negative regulation of transforming growth factor beta receptor signaling pathway. Predicted to be active in plasma membrane.

Recommended Dilutions

WB 1:500 - 1:2000

ELISA Recommended starting concentration is 1 µg/mL. Please optimize the concentration based on your specific assay requirements.

Immunogen Information

Gene ID

79674

Swiss Prot

Q14D04

Immunogen

Recombinant protein (or fragment). This information is considered to be commercially sensitive.

Synonyms

MELT; VEPH; VEPH1

Contact



www.abclonal.com

Product Information

Source

Rabbit

Isotype

IgG

Purification

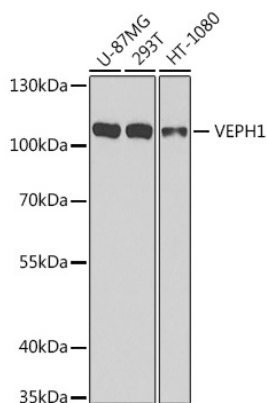
Affinity purification

Storage

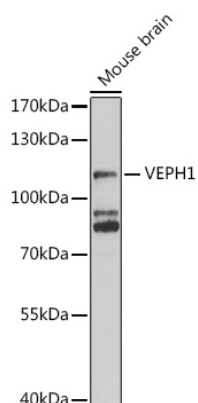
Store at -20°C. Avoid freeze / thaw cycles.

Buffer: PBS with 0.02% sodium azide, 50% glycerol, pH7.3.

Validation Data



Western blot analysis of various lysates using VEPH1 Rabbit pAb (A8510) at 1:1000 dilution.
Secondary antibody: HRP-conjugated Goat anti-Rabbit IgG (H+L) (AS014) at 1:10000 dilution.
Lysates/proteins: 25µg per lane.
Blocking buffer: 3% nonfat dry milk in TBST.
Detection: ECL Basic Kit (RM00020).
Exposure time: 30s.



Western blot analysis of lysates from Mouse brain, using VEPH1 Rabbit pAb (A8510) at 1:1000 dilution.
Secondary antibody: HRP-conjugated Goat anti-Rabbit IgG (H+L) (AS014) at 1:10000 dilution.
Lysates/proteins: 25µg per lane.
Blocking buffer: 3% nonfat dry milk in TBST.
Detection: ECL Enhanced Kit (RM00021).
Exposure time: 5s.