

A8525

Leader in Biomolecular Solutions for Life Science



# GPRC6A Rabbit pAb

Catalog No.: A8525

1 Publications

## Basic Information

### Observed MW

105kDa

### Calculated MW

105kDa

### Category

Polyclonal Antibody

### Applications

WB, ELISA

### Cross-Reactivity

Human, Mouse, Rat

## Background

Members of family C of the G protein-coupled receptor (GPCR) superfamily, such as GPRC6A, are characterized by an evolutionarily conserved amino acid-sensing motif linked to an intramembranous 7-transmembrane loop region. Several members of GPCR family C, including GPRC6A, also have a long N-terminal domain (summary by Pi et al., 2005 [PubMed 16199532]).

## Recommended Dilutions

**WB** 1:500 - 1:1000

**ELISA** Recommended starting concentration is 1 µg/mL. Please optimize the concentration based on your specific assay requirements.

## Immunogen Information

### Gene ID

222545

### Swiss Prot

Q5T6X5

### Immunogen

Recombinant protein (or fragment). This information is considered to be commercially sensitive.

### Synonyms

GPCR; bA86F4.3; GPRC6A

## Contact



[www.abclonal.com](http://www.abclonal.com)

## Product Information

### Source

Rabbit

### Isotype

IgG

### Purification

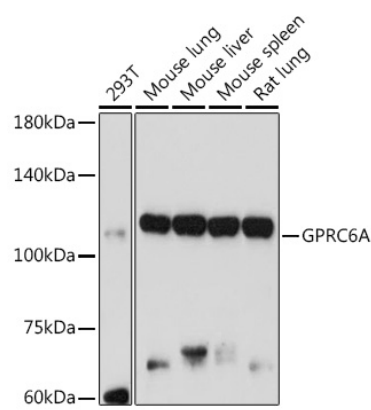
Affinity purification

### Storage

Store at -20°C. Avoid freeze / thaw cycles.

Buffer: PBS containing 50% glycerol, preserved with proclin300 or sodium azide (as specified on the Certificate of Analysis), pH 7.3.

# Validation Data



Western blot analysis of various lysates using GPRC6A Rabbit pAb (A8525) at 1:1000 dilution.  
Secondary antibody: HRP-conjugated Goat anti-Rabbit IgG (H+L) (AS014) at 1:10000 dilution.  
Lysates/proteins: 25µg per lane.  
Blocking buffer: 3% nonfat dry milk in TBST.  
Detection: ECL Basic Kit (RM00020).  
Exposure time: 180s.