

A8584

Leader in Biomolecular Solutions for Life Science



CHCHD3 Rabbit pAb

Catalog No.: A8584 **2 Publications**

Basic Information

Observed MW

30kDa

Calculated MW

26kDa

Category

Polyclonal Antibody

Applications

WB,IF/ICC,IP,ELISA

Cross-Reactivity

Human,Mouse,Rat

Background

The protein encoded by this gene is an inner mitochondrial membrane scaffold protein. Absence of the encoded protein affects the structural integrity of mitochondrial cristae and leads to reductions in ATP production, cell growth, and oxygen consumption. This protein is part of the mitochondrial contact site and cristae organizing system (MICOS). Several transcript variants encoding different isoforms have been found for this gene.

Recommended Dilutions

WB 1:500 - 1:2000

IF/ICC 1:50 - 1:200

IP 0.5µg-4µg antibody for
400µg-600µg extracts
of whole cells

ELISA Recommended starting
concentration is 1
µg/mL. Please optimize
the concentration
based on your specific
assay requirements.

Contact

 www.abclonal.com

Immunogen Information

Gene ID

54927

Swiss Prot

Q9NX63

Immunogen

Recombinant protein (or fragment). This information is considered to be commercially sensitive.

Synonyms

Mic19; MINOS3; MICOS19; PPP1R22; CHCHD3

Product Information

Source

Rabbit

Isotype

IgG

Purification

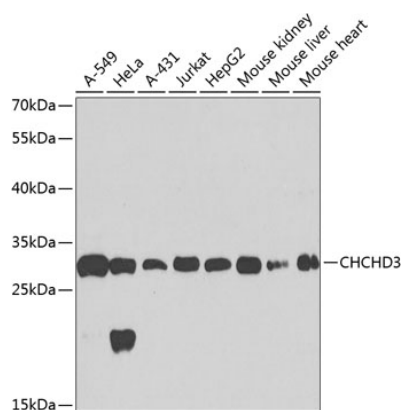
Affinity purification

Storage

Store at -20°C. Avoid freeze / thaw cycles.

Buffer: PBS with 0.02% sodium azide, 50% glycerol, pH7.3.

Validation Data



Western blot analysis of various lysates using CHCHD3 Rabbit pAb (A8584) at 1:1000 dilution.

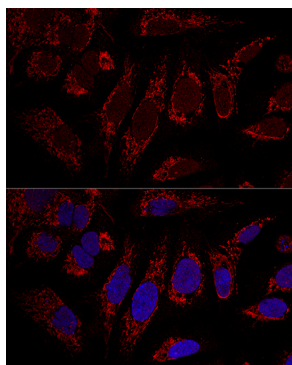
Secondary antibody: HRP-conjugated Goat anti-Rabbit IgG (H+L) (AS014) at 1:10000 dilution.

Lysates/proteins: 25µg per lane.

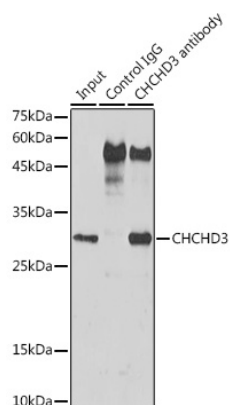
Blocking buffer: 3% nonfat dry milk in TBST.

Detection: ECL Basic Kit (RM00020).

Exposure time: 40s.



Confocal immunofluorescence analysis of U2OS cells using CHCHD3 Rabbit pAb (A8584) at dilution of 1:100. Blue: DAPI for nuclear staining.



Immunoprecipitation analysis of 600 µg extracts of Mouse liver cells using 3 µg CHCHD3 antibody (A8584). Western blot was performed from the immunoprecipitate using CHCHD3 antibody (A8584) at a dilution of 1:1000.