

A8648

Leader in Biomolecular Solutions for Life Science



LysRS/KARS Rabbit mAb

Catalog No.: A8648

Recombinant

1 Publications

Basic Information

Observed MW

75kDa/75kda

Calculated MW

68kDa

Category

SMab Recombinant Monoclonal
Antibody

Applications

WB,IHC-P,IF/ICC,IP,ELISA

Cross-Reactivity

Human,Mouse,Rat

CloneNo number

ARC1765

Background

Aminoacyl-tRNA synthetases are a class of enzymes that charge tRNAs with their cognate amino acids. Lysyl-tRNA synthetase is a homodimer localized to the cytoplasm which belongs to the class II family of tRNA synthetases. It has been shown to be a target of autoantibodies in the human autoimmune diseases, polymyositis or dermatomyositis. Alternatively spliced transcript variants encoding different isoforms have been found for this gene.

Recommended Dilutions

WB 1:1000 - 1:6000

IHC-P 1:50 - 1:200

IF/ICC 1:50 - 1:200

IP 0.5µg-4µg antibody for
200µg-400µg extracts
of whole cells

ELISA Recommended starting
concentration is 1
µg/mL. Please optimize
the concentration
based on your specific
assay requirements.

Immunogen Information

Gene ID

3735

Swiss Prot

Q15046

Immunogen

Recombinant protein (or fragment). This information is considered to be commercially sensitive.

Synonyms

KRS; KARS; KARS2; LEPID; CMTRIB; DEAPLE; DFN89; LysRS/KARS

Product Information

Source

Rabbit

Isotype

IgG

Purification

Affinity purification

Storage

Store at -20°C. Avoid freeze / thaw cycles.

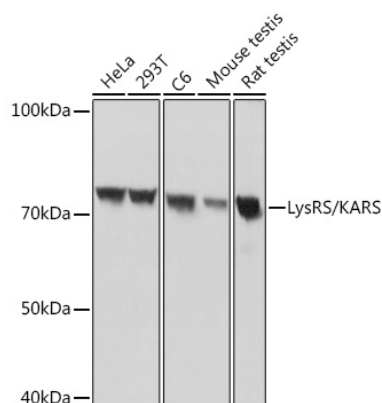
Buffer: PBS with 0.02% sodium azide, 0.05% BSA, 50% glycerol, pH7.3.

Contact

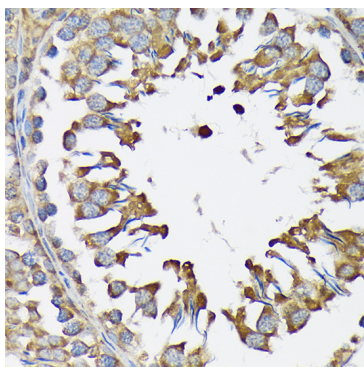


www.abclonal.com

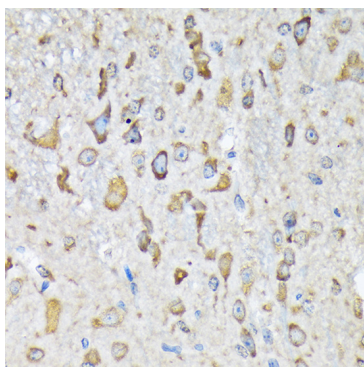
Validation Data



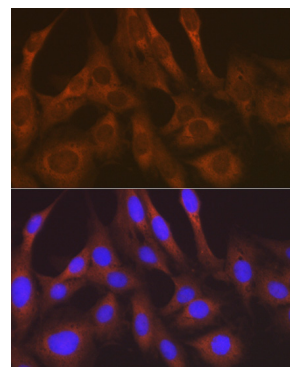
Western blot analysis of various lysates using LysRS/KARS Rabbit mAb (A8648) at 1:1000 dilution.
 Secondary antibody: HRP-conjugated Goat anti-Rabbit IgG (H+L) (AS014) at 1:10000 dilution.
 Lysates/proteins: 25µg per lane.
 Blocking buffer: 3% nonfat dry milk in TBST.
 Detection: ECL Basic Kit (RM00020).
 Exposure time: 1s.



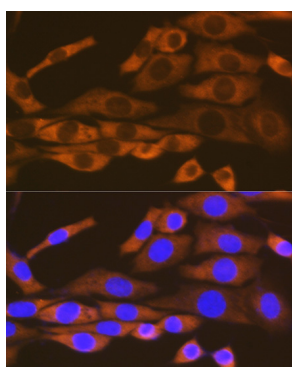
Immunohistochemistry analysis of paraffin-embedded Rat testis using LysRS/KARS Rabbit mAb (A8648) at dilution of 1:100 (40x lens).
 Microwave antigen retrieval performed with 0.01M Tris/EDTA Buffer (pH 9.0) prior to IHC staining.



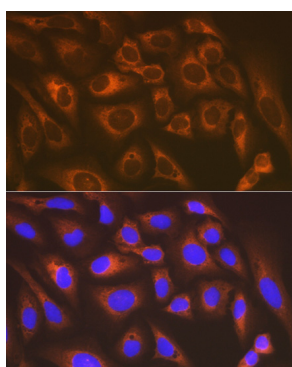
Immunohistochemistry analysis of paraffin-embedded Mouse spinal cord using LysRS/KARS Rabbit mAb (A8648) at dilution of 1:100 (40x lens).
 Microwave antigen retrieval performed with 0.01M Tris/EDTA Buffer (pH 9.0) prior to IHC staining.



Immunofluorescence analysis of C6 cells using LysRS/KARS Rabbit mAb (A8648) at dilution of 1:100 (40x lens).
 Secondary antibody: Cy3-conjugated Goat anti-Rabbit IgG (H+L) (AS007) at 1:500 dilution. Blue: DAPI for nuclear staining.

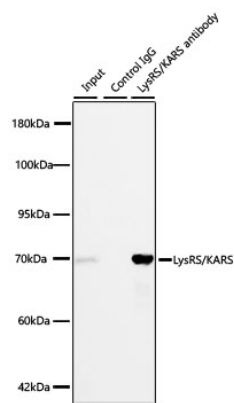


Immunofluorescence analysis of NIH-3T3 cells using LysRS/KARS Rabbit mAb (A8648) at dilution of 1:100 (40x lens).
 Secondary antibody: Cy3-conjugated Goat anti-Rabbit IgG (H+L) (AS007) at 1:500 dilution. Blue: DAPI for nuclear staining.



Immunofluorescence analysis of U-2 OS cells using LysRS/KARS Rabbit mAb (A8648) at dilution of 1:100 (40x lens).
 Secondary antibody: Cy3-conjugated Goat anti-Rabbit IgG (H+L) (AS007) at 1:500 dilution. Blue: DAPI for nuclear staining.

Validation Data



Immunoprecipitation of LysRS/KARS from 300µg µg extracts of 293F cells was performed using 3µg µg of LysRS/KARS Rabbit mAb (A8648). Rabbit Control IgG (AC005) was used to precipitate the Control IgG sample. IP samples were eluted with 1X Laemmli Buffer. The Input lane represents 10% of the total input. Western blot analysis of immunoprecipitates was conducted using () at a dilution of 1:3000.