

A8662

Leader in Biomolecular Solutions for Life Science



# UAP1 Rabbit mAb

Catalog No.: A8662

Recombinant

## Basic Information

### Observed MW

59kDa

### Calculated MW

59kDa

### Category

SMab Recombinant Monoclonal  
Antibody

### Applications

WB,IF/ICC,ELISA

### Cross-Reactivity

Human,Mouse,Rat

### CloneNo number

ARC1769

## Background

Enables identical protein binding activity. Predicted to be involved in UDP-N-acetylglucosamine biosynthetic process. Located in cytosol; nucleoplasm; and plasma membrane.

## Recommended Dilutions

**WB** 1:500 - 1:2000

**IF/ICC** 1:50 - 1:200

**ELISA** Recommended starting concentration is 1 µg/mL. Please optimize the concentration based on your specific assay requirements.

## Immunogen Information

### Gene ID

6675

### Swiss Prot

Q16222

### Immunogen

Synthetic peptide. This information is considered to be commercially sensitive.

### Synonyms

AGX; AGX1; AGX2; SPAG2; UAP1

## Contact

 [www.abclonal.com](http://www.abclonal.com)

## Product Information

### Source

Rabbit

### Isotype

IgG

### Purification

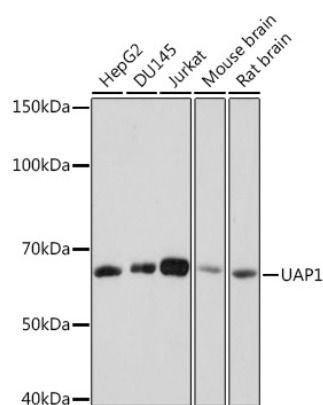
Affinity purification

### Storage

Store at -20°C. Avoid freeze / thaw cycles.

Buffer: PBS with 0.02% sodium azide,0.05% BSA,50% glycerol,pH7.3.

## Validation Data



Western blot analysis of various lysates using UAP1 Rabbit mAb (A8662) at 1:1000 dilution.

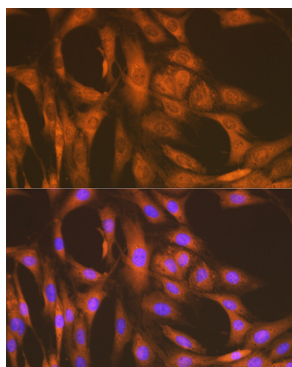
Secondary antibody: HRP-conjugated Goat anti-Rabbit IgG (H+L) (AS014) at 1:10000 dilution.

Lysates/proteins: 25µg per lane.

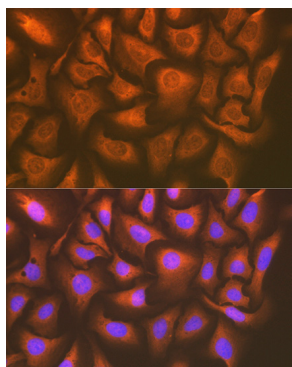
Blocking buffer: 3% nonfat dry milk in TBST.

Detection: ECL Basic Kit (RM00020).

Exposure time: 10s.



Immunofluorescence analysis of C6 cells using UAP1 Rabbit mAb (A8662) at dilution of 1:100 (40x lens). Secondary antibody: Cy3-conjugated Goat anti-Rabbit IgG (H+L) (AS007) at 1:500 dilution. Blue: DAPI for nuclear staining.



Immunofluorescence analysis of U-2 OS cells using UAP1 Rabbit mAb (A8662) at dilution of 1:100 (40x lens). Secondary antibody: Cy3-conjugated Goat anti-Rabbit IgG (H+L) (AS007) at 1:500 dilution. Blue: DAPI for nuclear staining.