

A8694

Leader in Biomolecular Solutions for Life Science



OPRD1 Rabbit mAb

Catalog No.: A8694

Recombinant

1 Publications

Basic Information

Observed MW

40kDa

Calculated MW

40kDa

Category

SMab Recombinant Monoclonal
Antibody

Applications

WB,ELISA

Cross-Reactivity

Human,Mouse,Rat

CloneNo number

ARC1786

Recommended Dilutions

WB 1:1000 - 1:6000

ELISA Recommended starting concentration is 1 µg/mL. Please optimize the concentration based on your specific assay requirements.

Contact

 www.abclonal.com

Background

Enables G protein-coupled enkephalin receptor activity. Involved in several processes, including G protein-coupled opioid receptor signaling pathway; cellular response to hypoxia; and positive regulation of peptidyl-serine phosphorylation. Is intrinsic component of plasma membrane.

Immunogen Information

Gene ID

4985

Swiss Prot

P41143

Immunogen

Synthetic peptide. This information is considered to be commercially sensitive.

Synonyms

DOP; DOR; DOR1; OPRD; OPRD1

Product Information

Source

Rabbit

Isotype

IgG

Purification

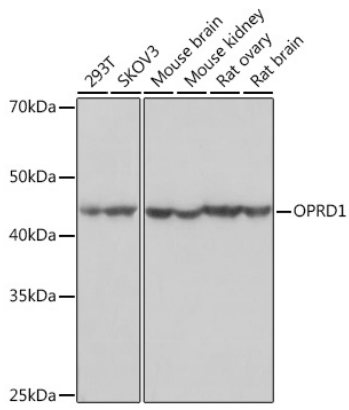
Affinity purification

Storage

Store at -20°C. Avoid freeze / thaw cycles.

Buffer: PBS with 0.02% sodium azide,0.05% BSA,50% glycerol,pH7.3.

Validation Data



Western blot analysis of various lysates using OPRD1 Rabbit mAb (A8694) at 1:1000 dilution.
Secondary antibody: HRP-conjugated Goat anti-Rabbit IgG (H+L) (AS014) at 1:10000 dilution.
Lysates/proteins: 25µg per lane.
Blocking buffer: 3% nonfat dry milk in TBST.
Detection: ECL Basic Kit (RM00020).
Exposure time: 3s.