

A8708

Leader in Biomolecular Solutions for Life Science



# IGHA1 Rabbit pAb

Catalog No.: A8708

## Basic Information

### Observed MW

60kDa

### Calculated MW

38kDa

### Category

Polyclonal Antibody

### Applications

WB,FC,ELISA

### Cross-Reactivity

Human

## Background

Contributes to immunoglobulin receptor binding activity. Involved in antibacterial humoral response; glomerular filtration; and positive regulation of respiratory burst. Located in extracellular space. Part of monomeric IgA immunoglobulin complex and secretory dimeric IgA immunoglobulin complex.

## Recommended Dilutions

**WB** 1:500 - 1:1000

**FC** 1:20 - 1:50

**ELISA** Recommended starting concentration is 1 µg/mL. Please optimize the concentration based on your specific assay requirements.

## Immunogen Information

### Gene ID

3493

### Swiss Prot

P01876

### Immunogen

Synthetic peptide. This information is considered to be commercially sensitive.

### Synonyms

IgA1; IGHA1

## Contact

 [www.abclonal.com](http://www.abclonal.com)

## Product Information

### Source

Rabbit

### Isotype

IgG

### Purification

Affinity purification

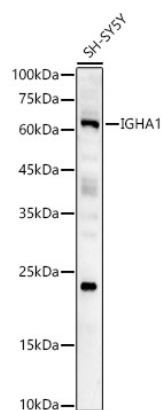
### Storage

Store at -20°C. Avoid freeze / thaw cycles.

Buffer: PBS with 0.05% proclin300,50% glycerol,pH7.3.

## Validation Data

---



Western blot analysis of lysates from SH-SY5Y cells, using IGHA1 Rabbit pAb (A8708) at 1:2000 dilution.

Secondary antibody: HRP-conjugated Goat anti-Rabbit IgG (H+L) (AS014) at 1:10000 dilution.

Lysates/proteins: 25µg per lane.

Blocking buffer: 3% nonfat dry milk in TBST.

Detection: ECL Basic Kit (RM00020).

Exposure time: 180s.