

A8803

Leader in Biomolecular Solutions for Life Science



SULF2 Rabbit pAb

Catalog No.: A8803

Basic Information

Observed MW

105kDa

Calculated MW

100kDa

Category

Polyclonal Antibody

Applications

WB,ELISA

Cross-Reactivity

Mouse

Background

Heparan sulfate proteoglycans (HSPGs) act as coreceptors for numerous heparin-binding growth factors and cytokines and are involved in cell signaling. Heparan sulfate 6-O-endosulfatases, such as SULF2, selectively remove 6-O-sulfate groups from heparan sulfate. This activity modulates the effects of heparan sulfate by altering binding sites for signaling molecules (Dai et al., 2005 [PubMed 16192265]).

Recommended Dilutions

WB 1:500 - 1:2000

ELISA Recommended starting concentration is 1 µg/mL. Please optimize the concentration based on your specific assay requirements.

Immunogen Information

Gene ID

55959

Swiss Prot

Q8IWU5

Immunogen

Recombinant protein (or fragment). This information is considered to be commercially sensitive.

Synonyms

HSULF-2; SULF2

Contact

 www.abclonal.com

Product Information

Source

Rabbit

Isotype

IgG

Purification

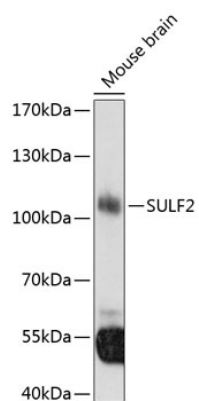
Affinity purification

Storage

Store at -20°C. Avoid freeze / thaw cycles.

Buffer: PBS with 0.01% thimerosal, 50% glycerol, pH7.3.

Validation Data



Western blot analysis of lysates from mouse brain, using SULF2 Rabbit pAb (A8803) at 1:3000 dilution.

Secondary antibody: HRP-conjugated Goat anti-Rabbit IgG (H+L) (AS014) at 1:10000 dilution.

Lysates/proteins: 25µg per lane.

Blocking buffer: 3% nonfat dry milk in TBST.

Detection: ECL Basic Kit (RM00020).

Exposure time: 10s.