

A8856

Leader in Biomolecular Solutions for Life Science



SRFBP1 Rabbit pAb

Catalog No.: A8856

Basic Information

Observed MW

48kDa

Calculated MW

49kDa

Category

Polyclonal Antibody

Applications

WB,ELISA

Cross-Reactivity

Mouse

Background

Enables RNA binding activity. Predicted to be involved in maturation of SSU-rRNA. Predicted to be located in perinuclear region of cytoplasm. Predicted to be part of 90S preribosome. Predicted to be active in nucleus.

Recommended Dilutions

WB 1:500 - 1:2000

ELISA Recommended starting concentration is 1 µg/mL. Please optimize the concentration based on your specific assay requirements.

Immunogen Information

Gene ID

153443

Swiss Prot

Q8NEF9

Immunogen

Recombinant protein (or fragment). This information is considered to be commercially sensitive.

Synonyms

P49; Rlb1; BUD22; STRAP; p49/STRAP; SRFBP1

Contact



www.abclonal.com

Product Information

Source

Rabbit

Isotype

IgG

Purification

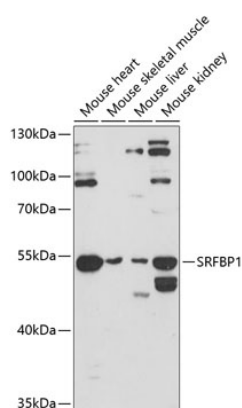
Affinity purification

Storage

Store at -20°C. Avoid freeze / thaw cycles.

Buffer: PBS with 0.01% thimerosal, 50% glycerol, pH7.3.

Validation Data



Western blot analysis of various lysates using SRFBP1 Rabbit pAb (A8856) at 1:3000 dilution.

Secondary antibody: HRP-conjugated Goat anti-Rabbit IgG (H+L) (AS014) at 1:10000 dilution.

Lysates/proteins: 25µg per lane.

Blocking buffer: 3% nonfat dry milk in TBST.

Detection: ECL Enhanced Kit (RM00021).

Exposure time: 90s.