

A9101

Leader in Biomolecular Solutions for Life Science



EPB41L2 Rabbit pAb

Catalog No.: A9101

Basic Information

Observed MW

180kDa

Calculated MW

113kDa

Category

Polyclonal Antibody

Applications

WB,IF/ICC,ELISA

Cross-Reactivity

Human

Background

Predicted to enable PH domain binding activity; cytoskeletal protein binding activity; and structural molecule activity. Involved in positive regulation of protein localization to cell cortex. Located in cell junction; nucleoplasm; and plasma membrane. Colocalizes with COP9 signalosome.

Recommended Dilutions

WB 1:200 - 1:2000

IF/ICC 1:50 - 1:200

ELISA Recommended starting concentration is 1 µg/mL. Please optimize the concentration based on your specific assay requirements.

Immunogen Information

Gene ID

2037

Swiss Prot

O43491

Immunogen

Recombinant protein (or fragment). This information is considered to be commercially sensitive.

Synonyms

4.1G; 4.1-G; EPB41L2

Contact

 www.abclonal.com

Product Information

Source

Rabbit

Isotype

IgG

Purification

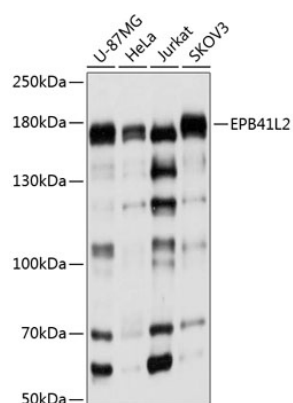
Affinity purification

Storage

Store at -20°C. Avoid freeze / thaw cycles.

Buffer: PBS with 0.01% thimerosal, 50% glycerol, pH7.3.

Validation Data



Western blot analysis of various lysates using EPB41L2 Rabbit pAb (A9101) at 1:1000 dilution.

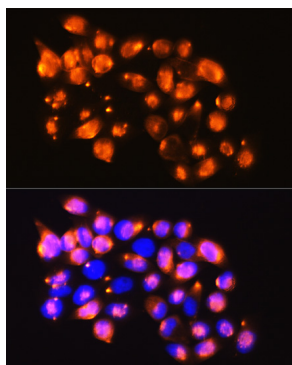
Secondary antibody: HRP-conjugated Goat anti-Rabbit IgG (H+L) (AS014) at 1:10000 dilution.

Lysates/proteins: 25µg per lane.

Blocking buffer: 3% nonfat dry milk in TBST.

Detection: ECL Basic Kit (RM00020).

Exposure time: 5s.



Immunofluorescence analysis of HeLa cells using EPB41L2 Rabbit pAb (A9101) at dilution of 1:100. Blue: DAPI for nuclear staining.