

A9168

Leader in Biomolecular Solutions for Life Science



HMGB2 Rabbit mAb

Catalog No.: A9168

Recombinant

2 Publications

Basic Information

Observed MW

24kDa

Calculated MW

24kDa

Category

SMab Recombinant Monoclonal
Antibody

Applications

WB,IHC-
P,IF/ICC,IP,ChIP,ELISA,CUT&Tag

Cross-Reactivity

Human,Mouse,Rat

CloneNo number

ARC1460

Recommended Dilutions

WB 1:1000 - 1:6000

IHC-P 1:200 - 1:2000

IF/ICC 1:100 - 1:1000

IP 0.5µg-4µg antibody for
200µg-400µg extracts
of whole cells

ELISA Recommended starting
concentration is 1
µg/mL. Please optimize
the concentration
based on your specific
assay requirements.

ChIP 5µg antibody for
10µg-15µg of
Chromatin

CUT&Tag 10⁵ cells /1 µg

Background

This gene encodes a member of the non-histone chromosomal high mobility group protein family. The proteins of this family are chromatin-associated and ubiquitously distributed in the nucleus of higher eukaryotic cells. In vitro studies have demonstrated that this protein is able to efficiently bend DNA and form DNA circles. These studies suggest a role in facilitating cooperative interactions between cis-acting proteins by promoting DNA flexibility. This protein was also reported to be involved in the final ligation step in DNA end-joining processes of DNA double-strand breaks repair and V(D)J recombination.

Immunogen Information

Gene ID
3148

Swiss Prot
P26583

Immunogen

Synthetic peptide. This information is considered to be commercially sensitive.

Synonyms

HMG2; HMGB2

Product Information

Source
Rabbit


Isotype
IgG

Purification
Affinity purification

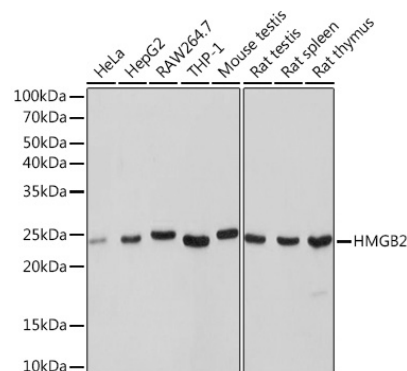
Storage

Store at -20°C. Avoid freeze / thaw cycles.
Buffer: PBS with 0.02% sodium azide,0.05% BSA,50% glycerol,pH7.3.

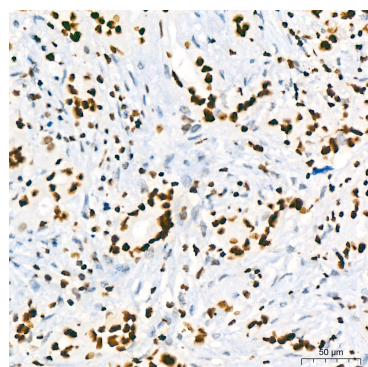
Contact

 www.abclonal.com

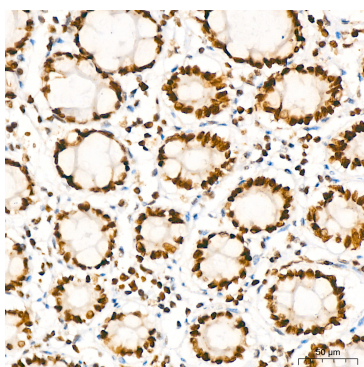
Validation Data



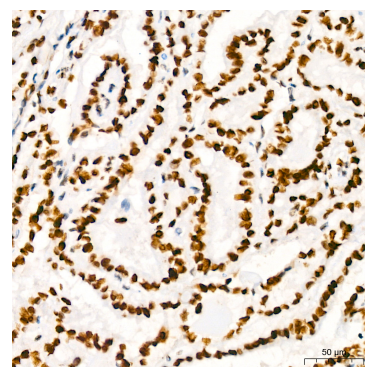
Western blot analysis of various lysates using HMGB2 Rabbit mAb (A9168) at 1:1000 dilution.
 Secondary antibody: HRP-conjugated Goat anti-Rabbit IgG (H+L) (AS014) at 1:10000 dilution.
 Lysates/proteins: 25µg per lane.
 Blocking buffer: 3% nonfat dry milk in TBST.
 Detection: ECL Basic Kit (RM00020).
 Exposure time: 1s.



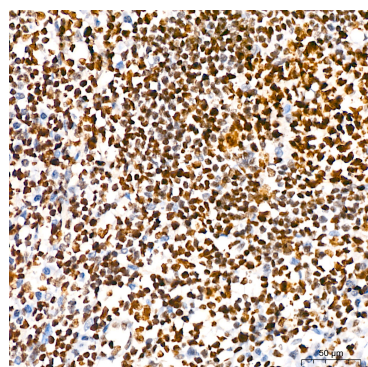
Immunohistochemistry analysis of paraffin-embedded Human breast cancer using HMGB2 Rabbit mAb (A9168) at dilution of 1:200 (40x lens). High pressure antigen retrieval performed with 0.01M Tris/EDTA Buffer (pH 9.0) prior to IHC staining.



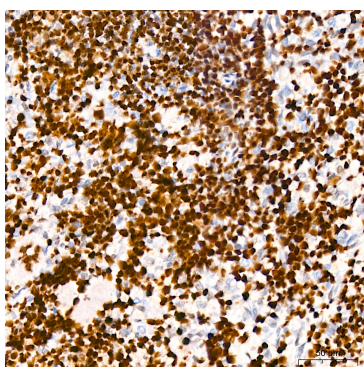
Immunohistochemistry analysis of paraffin-embedded Human colon using HMGB2 Rabbit mAb (A9168) at dilution of 1:200 (40x lens). High pressure antigen retrieval performed with 0.01M Tris/EDTA Buffer (pH 9.0) prior to IHC staining.



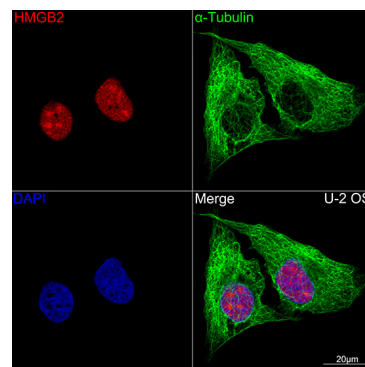
Immunohistochemistry analysis of paraffin-embedded Human thyroid cancer using HMGB2 Rabbit mAb (A9168) at dilution of 1:200 (40x lens). High pressure antigen retrieval performed with 0.01M Tris/EDTA Buffer (pH 9.0) prior to IHC staining.



Immunohistochemistry analysis of paraffin-embedded Human tonsil using HMGB2 Rabbit mAb (A9168) at dilution of 1:200 (40x lens). High pressure antigen retrieval performed with 0.01M Tris/EDTA Buffer (pH 9.0) prior to IHC staining.

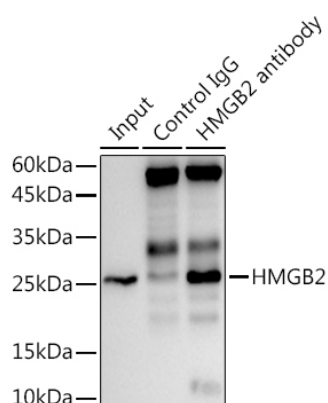


Immunohistochemistry analysis of paraffin-embedded Rat spleen using HMGB2 Rabbit mAb (A9168) at dilution of 1:200 (40x lens). High pressure antigen retrieval performed with 0.01M Tris/EDTA Buffer (pH 9.0) prior to IHC staining.

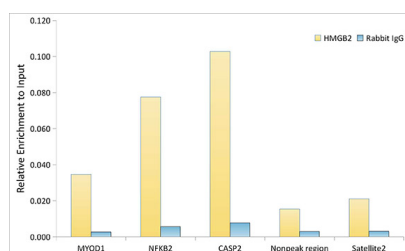


Confocal imaging of U-2 OS cells using HMGB2 Rabbit mAb (A9168, dilution 1:100) (Red). The cells were counterstained with α-Tubulin Mouse mAb (AC012, dilution 1:400) (Green). DAPI was used for nuclear staining (blue). Objective: 100x.

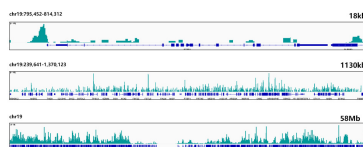
Validation Data



Immunoprecipitation analysis of 300 µg extracts from Mouse testis using 3 µg HMGB2 antibody (A9168). Western blot was performed from the immunoprecipitate using HMGB2 (A9168) at a dilution of 1:1000.



Chromatin immunoprecipitation analysis of extracts from HepG2 cells, using HMGB2 antibody (A9168) and rabbit IgG. The amount of immunoprecipitated DNA was checked by quantitative PCR. Histogram was constructed by the ratios of the immunoprecipitated DNA to the input.



CUT&Tag was performed using the CUT&Tag Assay Kit (pAG-Tn5) for Illumina(RK20265) from 10^5 K562 cells with 1µg HMGB2 Rabbit mAb(A9168), along with a Goat Anti-Rabbit IgG(H+L). The CUT&Tag results indicate the enrichment pattern of HMGB2 in representative gene loci (PTBP1), as shown in figure.