

A9256

Leader in Biomolecular Solutions for Life Science



SQRDL Rabbit pAb

Catalog No.: A9256

Basic Information

Observed MW

48kDa

Calculated MW

50kDa

Category

Polyclonal Antibody

Applications

WB,ELISA

Cross-Reactivity

Human,Mouse,Rat

Background

The protein encoded by this gene may function in mitochondria to catalyze the conversion of sulfide to persulfides, thereby decreasing toxic concentrations of sulfide. Alternative splicing results in multiple transcript variants that encode the same protein.

Recommended Dilutions

WB 1:1000 - 1:2000

ELISA Recommended starting concentration is 1 µg/mL. Please optimize the concentration based on your specific assay requirements.

Immunogen Information

Gene ID

58472

Swiss Prot

Q9Y6N5

Immunogen

Recombinant protein (or fragment). This information is considered to be commercially sensitive.

Synonyms

SQR; SQRDL; CGI-44; PRO1975

Contact

 www.abclonal.com

Product Information

Source

Rabbit

Isotype

IgG

Purification

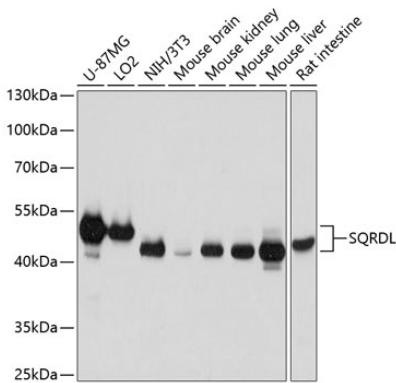
Affinity purification

Storage

Store at -20°C. Avoid freeze / thaw cycles.

Buffer: PBS with 0.09% Sodium azide, 50% glycerol, pH7.3.

Validation Data



Western blot analysis of various lysates using SQRDL Rabbit pAb (A9256) at 1:3000 dilution.
Secondary antibody: HRP-conjugated Goat anti-Rabbit IgG (H+L) (AS014) at 1:10000 dilution.
Lysates/proteins: 25µg per lane.
Blocking buffer: 3% nonfat dry milk in TBST.
Detection: ECL Basic Kit (RM00020).
Exposure time: 10s.