

A9287

Leader in Biomolecular Solutions for Life Science



GTF3C4 Rabbit pAb

Catalog No.: A9287

Basic Information

Observed MW

95kDa

Calculated MW

92kDa

Category

Polyclonal Antibody

Applications

WB,IF/ICC,ELISA

Cross-Reactivity

Human,Rat

Background

Predicted to enable enzyme activator activity. Predicted to contribute to DNA binding activity. Predicted to be involved in 5S class rRNA transcription by RNA polymerase III and tRNA transcription by RNA polymerase III. Located in mitochondrion and nucleoplasm. Part of transcription factor TFIIIC complex.

Recommended Dilutions

WB 1:500 - 1:2000

IF/ICC 1:50 - 1:200

ELISA Recommended starting concentration is 1 µg/mL. Please optimize the concentration based on your specific assay requirements.

Immunogen Information

Gene ID

9329

Swiss Prot

Q9UKN8

Immunogen

Recombinant protein (or fragment). This information is considered to be commercially sensitive.

Synonyms

KAT12; TFIIIC90; TFIIIC90; TF3C-delta; TFIIICDELTA; GTF3C4

Contact



www.abclonal.com

Product Information

Source

Rabbit

Isotype

IgG

Purification

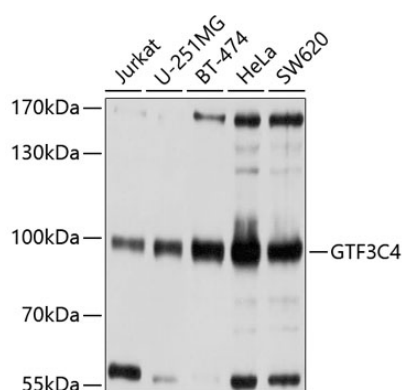
Affinity purification

Storage

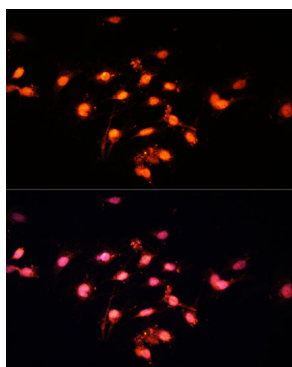
Store at -20°C. Avoid freeze / thaw cycles.

Buffer: PBS with 0.02% sodium azide, 50% glycerol, pH 7.3.

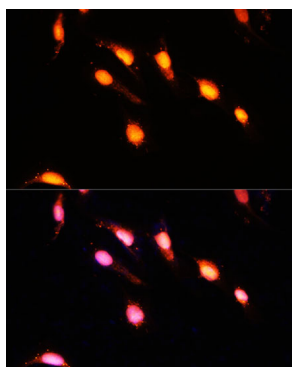
Validation Data



Western blot analysis of various lysates using GTF3C4 Rabbit pAb (A9287) at 1:1000 dilution.
Secondary antibody: HRP-conjugated Goat anti-Rabbit IgG (H+L) (AS014) at 1:10000 dilution.
Lysates/proteins: 25µg per lane.
Blocking buffer: 3% nonfat dry milk in TBST.
Detection: ECL Basic Kit (RM00020).
Exposure time: 1s.



Immunofluorescence analysis of C6 cells using GTF3C4 Rabbit pAb (A9287) at dilution of 1:100 (40x lens). Secondary antibody: Cy3-conjugated Goat anti-Rabbit IgG (H+L) (AS007) at 1:500 dilution. Blue: DAPI for nuclear staining.



Immunofluorescence analysis of U-2 OS cells using GTF3C4 Rabbit pAb (A9287) at dilution of 1:100 (40x lens). Secondary antibody: Cy3-conjugated Goat anti-Rabbit IgG (H+L) (AS007) at 1:500 dilution. Blue: DAPI for nuclear staining.