

A9315

Leader in Biomolecular Solutions for Life Science



## CAMSAP2 Rabbit pAb

Catalog No.: A9315

### Basic Information

#### Observed MW

189kDa

#### Calculated MW

168kDa

#### Category

Polyclonal Antibody

#### Applications

WB, ELISA

#### Cross-Reactivity

Human

### Background

Enables microtubule minus-end binding activity. Involved in several processes, including axon development; regulation of dendrite development; and regulation of organelle organization. Located in cytosol and microtubule end. Colocalizes with Golgi apparatus; centrosome; and microtubule minus-end.

### Recommended Dilutions

**WB** 1:500 - 1:2000

**ELISA** Recommended starting concentration is 1 µg/mL. Please optimize the concentration based on your specific assay requirements.

### Immunogen Information

#### Gene ID

23271

#### Swiss Prot

Q08AD1

#### Immunogen

Recombinant protein (or fragment). This information is considered to be commercially sensitive.

#### Synonyms

CAMSAP1L1; CAMSAP2

### Contact



[www.abclonal.com](http://www.abclonal.com)

### Product Information

#### Source

Rabbit

#### Isotype

IgG

#### Purification

Affinity purification

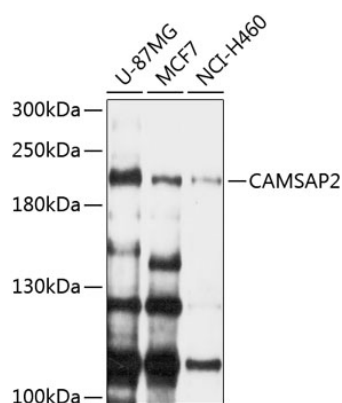
#### Storage

Store at -20°C. Avoid freeze / thaw cycles.

Buffer: PBS with 0.02% sodium azide, 50% glycerol, pH 7.3.

## Validation Data

---



Western blot analysis of various lysates using CAMSAP2 Rabbit pAb (A9315) at 1:1000 dilution.

Secondary antibody: HRP-conjugated Goat anti-Rabbit IgG (H+L) (AS014) at 1:10000 dilution.

Lysates/proteins: 25µg per lane.

Blocking buffer: 3% nonfat dry milk in TBST.

Detection: ECL Enhanced Kit (RM00021).

Exposure time: 90s.