

A9524

Leader in Biomolecular Solutions for Life Science



LIN28B Rabbit mAb

Catalog No.: A9524

Recombinant

Basic Information

Observed MW

21kDa/32kDa

Calculated MW

27kDa

Category

SMab Recombinant Monoclonal
Antibody

Applications

WB,IHC-P,ELISA

Cross-Reactivity

Human

CloneNo number

ARC1616

Recommended Dilutions

WB 1:500 - 1:1000

IHC-P 1:500 - 1:2000

ELISA Recommended starting
concentration is 1
µg/mL. Please optimize
the concentration
based on your specific
assay requirements.

Contact

 www.abclonal.com

Background

The protein encoded by this gene belongs to the lin-28 family, which is characterized by the presence of a cold-shock domain and a pair of CCHC zinc finger domains. This gene is highly expressed in testis, fetal liver, placenta, and in primary human tumors and cancer cell lines. It is negatively regulated by microRNAs that target sites in the 3' UTR, and overexpression of this gene in primary tumors is linked to the repression of let-7 family of microRNAs and derepression of let-7 targets, which facilitates cellular transformation.

Immunogen Information

Gene ID

389421

Swiss Prot

Q6ZN17

Immunogen

Recombinant protein (or fragment). This information is considered to be commercially sensitive.

Synonyms

CSDD2; LIN28B

Product Information

Source

Rabbit

Isotype

IgG

Purification

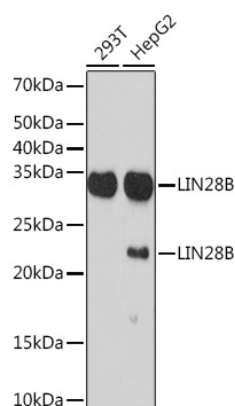
Affinity purification

Storage

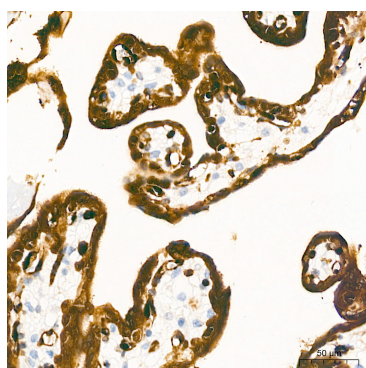
Store at -20°C. Avoid freeze / thaw cycles.

Buffer: PBS with 0.02% sodium azide, 0.05% BSA, 50% glycerol, pH7.3.

Validation Data



Western blot analysis of various lysates using LIN28B Rabbit mAb (A9524) at 1:1000 dilution.
Secondary antibody: HRP-conjugated Goat anti-Rabbit IgG (H+L) (AS014) at 1:10000 dilution.
Lysates/proteins: 25µg per lane.
Blocking buffer: 3% nonfat dry milk in TBST.
Detection: ECL Basic Kit (RM00020).
Exposure time: 3min.



Immunohistochemistry analysis of paraffin-embedded Human placenta tissue using LIN28B Rabbit mAb (A9524) at a dilution of 1:2000 (40x lens). High pressure antigen retrieval performed with 0.01M Tris-EDTA Buffer (pH 9.0) prior to IHC staining.