

A9566

Leader in Biomolecular Solutions for Life Science



Fascin/FSCN1 Rabbit mAb

Catalog No.: A9566

Recombinant

2 Publications

Basic Information

Observed MW

54kDa

Calculated MW

55kDa

Category

SMab Recombinant Monoclonal
Antibody

Applications

WB,IHC-P,ELISA

Cross-Reactivity

Human,Mouse,Rat

CloneNo number

ARC1638

Background

This gene encodes a member of the fascin family of actin-binding proteins. Fascin proteins organize F-actin into parallel bundles, and are required for the formation of actin-based cellular protrusions. The encoded protein plays a critical role in cell migration, motility, adhesion and cellular interactions. Expression of this gene is known to be regulated by several microRNAs, and overexpression of this gene may play a role in the metastasis of multiple types of cancer by increasing cell motility. Expression of this gene is also a marker for Reed-Sternberg cells in Hodgkin's lymphoma. A pseudogene of this gene is located on the long arm of chromosome 15.

Recommended Dilutions

WB 1:500 - 1:1000

IHC-P 1:50 - 1:200

ELISA Recommended starting
concentration is 1
µg/mL. Please optimize
the concentration
based on your specific
assay requirements.

Immunogen Information

Gene ID

6624

Swiss Prot

Q16658

Immunogen

Recombinant protein (or fragment). This information is considered to be commercially sensitive.

Synonyms

HSN; SNL; p55; FAN1; Fascin/FSCN1

Contact



www.abclonal.com

Product Information

Source

Rabbit

Isotype

IgG

Purification

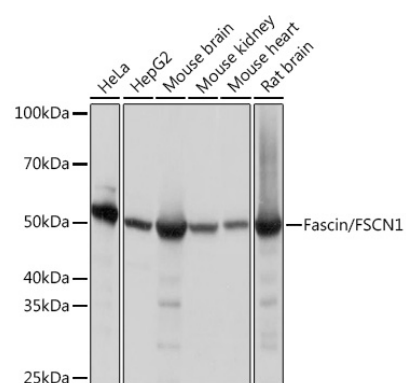
Affinity purification

Storage

Store at -20°C. Avoid freeze / thaw cycles.

Buffer: PBS with 0.02% sodium azide, 0.05% BSA, 50% glycerol, pH7.3.

Validation Data



Western blot analysis of various lysates using Fascin/FSCN1 Rabbit mAb (A9566) at 1:1000 dilution.

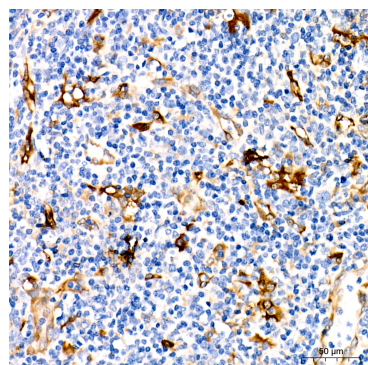
Secondary antibody: HRP-conjugated Goat anti-Rabbit IgG (H+L) (AS014) at 1:10000 dilution.

Lysates/proteins: 25µg per lane.

Blocking buffer: 3% nonfat dry milk in TBST.

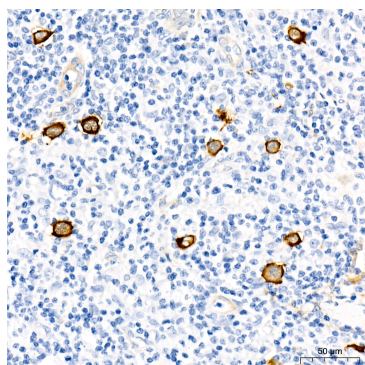
Detection: ECL Basic Kit (RM00020).

Exposure time: 1s.

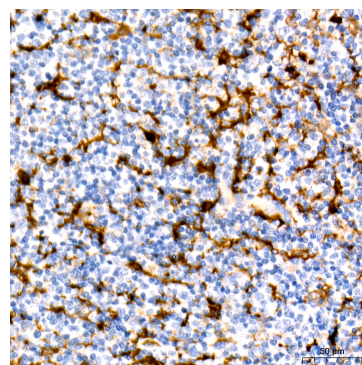


Immunohistochemistry analysis of paraffin-embedded Human anaplastic large cell lymphoma using Fascin/FSCN1 Rabbit mAb (A9566) at dilution of 1:100 (40x lens).

Microwave antigen retrieval performed with 0.01M Tris/EDTA Buffer (pH 9.0) prior to IHC staining.



Immunohistochemistry analysis of paraffin-embedded Human Hodgkin lymphoma using Fascin/FSCN1 Rabbit mAb (A9566) at dilution of 1:100 (40x lens). Microwave antigen retrieval performed with 0.01M Tris/EDTA Buffer (pH 9.0) prior to IHC staining.



Immunohistochemistry analysis of paraffin-embedded Human tonsil using Fascin/FSCN1 Rabbit mAb (A9566) at dilution of 1:100 (40x lens). Microwave antigen retrieval performed with 0.01M Tris/EDTA Buffer (pH 9.0) prior to IHC staining.