

A9770

Leader in Biomolecular Solutions for Life Science



CD3D Rabbit mAb

Catalog No.: A9770

Recombinant

2 Publications

Basic Information

Observed MW

23kDa

Calculated MW

19kDa

Category

SMab Recombinant Monoclonal
Antibody

Applications

WB,IF/ICC,FC,ELISA

Cross-Reactivity

Human

CloneNo number

ARC1741

Recommended Dilutions

WB 1:500 - 1:1000

IF/ICC 1:200 - 1:800

FC 1:50 - 1:200

ELISA Recommended starting
concentration is 1
µg/mL. Please optimize
the concentration
based on your specific
assay requirements.

Contact



www.abclonal.com

Background

The protein encoded by this gene is part of the T-cell receptor/CD3 complex (TCR/CD3 complex) and is involved in T-cell development and signal transduction. The encoded membrane protein represents the delta subunit of the CD3 complex, and along with four other CD3 subunits, binds either TCR alpha/beta or TCR gamma/delta to form the TCR/CD3 complex on the surface of T-cells. Defects in this gene are a cause of severe combined immunodeficiency autosomal recessive T-cell-negative/B-cell-positive/NK-cell-positive (SCIDBNK). Two transcript variants encoding different isoforms have been found for this gene. Other variants may also exist, but the full-length nature of their transcripts has yet to be defined.

Immunogen Information

Gene ID

915

Swiss Prot

P04234

Immunogen

Synthetic peptide. This information is considered to be commercially sensitive.

Synonyms

T3D; IMD19; CD3DELTA; CD3-DELTA; CD3D

Product Information

Source

Rabbit

Isotype

IgG

Purification

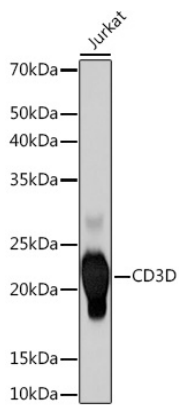
Affinity purification

Storage

Store at -20°C. Avoid freeze / thaw cycles.

Buffer: PBS with 0.02% sodium azide, 0.05% BSA, 50% glycerol, pH 7.3.

Validation Data



Western blot analysis of lysates from Jurkat cells, using CD3D Rabbit mAb (A9770) at 1:500 dilution.

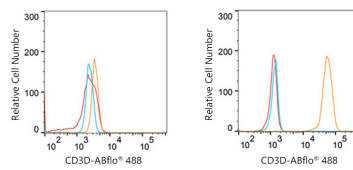
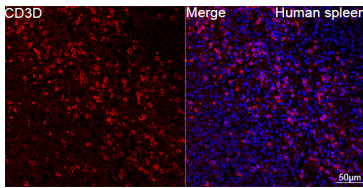
Secondary antibody: HRP-conjugated Goat anti-Rabbit IgG (H+L) (AS014) at 1:10000 dilution.

Lysates/proteins: 25µg per lane.

Blocking buffer: 3% nonfat dry milk in TBST.

Detection: ECL Basic Kit (RM00020).

Exposure time: 60s.



Confocal imaging of paraffin-embedded Human spleen tissue using CD3D Rabbit mAb (A9770, dilution 1:200) followed by a further incubation with Cy3 Goat Anti-Rabbit IgG (H+L) (AS007, dilution 1:500) (Red). DAPI was used for nuclear staining (Blue). Objective: 40x. Perform high pressure antigen retrieval with 0.01 M citrate buffer (pH 6.0) prior to IF staining.

Flow cytometry: 1×10^6 Raji cells (negative control, left) and Jurkat cells (right) were surface-stained with CD3D Rabbit mAb (A9770, 2.5 µg/mL orange line) or ABflo® 488 IgG isotype control (AC042, 2.5 µg/mL, blue line). Non-fluorescently stained cells were used as blank control (red line).