

A9834

Leader in Biomolecular Solutions for Life Science



## OTC Rabbit pAb

Catalog No.: A9834

### Basic Information

**Observed MW**

40kDa/42kDa

**Calculated MW**

40kDa

**Category**

Polyclonal Antibody

**Applications**

WB,ELISA

**Cross-Reactivity**

Human,Mouse,Rat

### Background

This nuclear gene encodes a mitochondrial matrix enzyme. The encoded protein is involved in the urea cycle which functions to detoxify ammonia into urea for excretion. Mutations in this enzyme lead to ornithine transcarbamylase deficiency, which causes hyperammonemia.

### Recommended Dilutions

**WB** 1:1000 - 1:4000

**ELISA** Recommended starting concentration is 1 µg/mL. Please optimize the concentration based on your specific assay requirements.

### Immunogen Information

**Gene ID**

5009

**Swiss Prot**

P00480

**Immunogen**

Recombinant protein (or fragment). This information is considered to be commercially sensitive.

**Synonyms**

OCTD; OTC1; OTCD; OTCas; OTC

### Contact



[www.abclonal.com](http://www.abclonal.com)

### Product Information

**Source**

Rabbit

**Isotype**

IgG

**Purification**

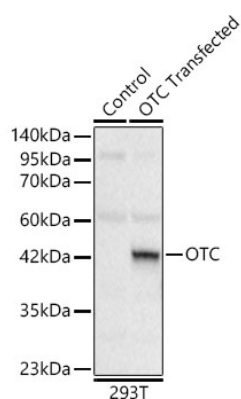
Affinity purification

**Storage**

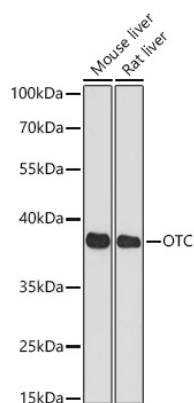
Store at -20°C. Avoid freeze / thaw cycles.

Buffer: PBS containing 50% glycerol, preserved with proclin300 or sodium azide (as specified on the Certificate of Analysis), pH 7.3.

## Validation Data



Western blot analysis of lysates from wild type (WT) and 293T cells transfected with OTC using OTC Rabbit pAb (A9834) at 1:2000 dilution.  
Secondary antibody: HRP-conjugated Goat anti-Rabbit IgG (H+L) (AS014) at 1:10000 dilution.  
Lysates/proteins: 25µg per lane.  
Blocking buffer: 3% nonfat dry milk in TBST.  
Detection: ECL Basic Kit (RM00020).  
Exposure time: 10s.



Western blot analysis of various lysates, using OTC Rabbit pAb (A9834) at 1:2000 dilution.  
Secondary antibody: HRP-conjugated Goat anti-Rabbit IgG (H+L) (AS014) at 1:10000 dilution.  
Lysates/proteins: 25µg per lane.  
Blocking buffer: 3% nonfat dry milk in TBST.  
Detection: ECL Basic Kit (RM00020).  
Exposure time: 10s.