

A9939

Leader in Biomolecular Solutions for Life Science



## MT-CO3 Rabbit pAb

Catalog No.: A9939

4 Publications

### Basic Information

#### Observed MW

30kDa

#### Calculated MW

29kDa

#### Category

Polyclonal Antibody

#### Applications

WB, ELISA

#### Cross-Reactivity

Mouse, Rat

### Background

Predicted to enable electron transfer activity and oxidoreduction-driven active transmembrane transporter activity. Predicted to be involved in mitochondrial electron transport, cytochrome c to oxygen and respiratory chain complex IV assembly. Located in mitochondrion. Is expressed in several structures, including alimentary system; brain; heart; integumental system; and sensory organ. Human ortholog(s) of this gene implicated in MELAS syndrome. Orthologous to human MT-CO3 (mitochondrially encoded cytochrome c oxidase III).

### Recommended Dilutions

**WB** 1:500 - 1:2000

**ELISA** Recommended starting concentration is 1 µg/mL. Please optimize the concentration based on your specific assay requirements.

### Immunogen Information

#### Gene ID

17710

#### Swiss Prot

#### Immunogen

Synthetic peptide. This information is considered to be commercially sensitive.

#### Synonyms

COX3; MT-CO3

### Contact

 [www.abclonal.com](http://www.abclonal.com)

### Product Information

#### Source

Rabbit

#### Isotype

IgG

#### Purification

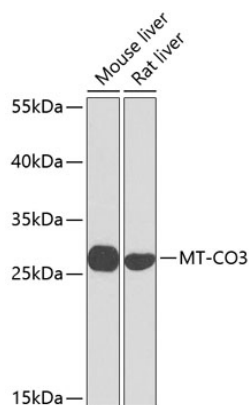
Affinity purification

#### Storage

Store at -20°C. Avoid freeze / thaw cycles.

Buffer: PBS with 0.02% sodium azide, 50% glycerol, pH 7.3.

## Validation Data



Western blot analysis of various lysates using MT-CO3 Rabbit pAb (A9939) at 1:1000 dilution.  
Secondary antibody: HRP-conjugated Goat anti-Rabbit IgG (H+L) (AS014) at 1:10000 dilution.  
Lysates/proteins: 25µg per lane.  
Blocking buffer: 3% nonfat dry milk in TBST.  
Detection: ECL Basic Kit (RM00020).  
Exposure time: 30s.