

AC042

Leader in Biomolecular Solutions for Life Science



Rabbit IgG isotype control

Catalog No.: AC042

9 Publications

Basic Information

Observed MW

Calculated MW

Category

SMab Recombinant Monoclonal
Antibody

Applications

WB,IHC-P,IF/ICC,ChIP,FC,ELISA

Cross-Reactivity

CloneNo number

ARC5105-03

Background

The protein encoded by this gene is a transcriptional regulator and tumor suppressor, serving as an activator of genes involved in both innate and acquired immune responses.

Recommended Dilutions

WB	1:5000 - 1:10000
IHC-P	1:50 - 1:200
IF/ICC	1:50 - 1:200
ChIP	3µg antibody for 10µg-15µg of Chromatin
ELISA	Recommended starting concentration is 1 µg/mL. Please optimize the concentration based on your specific assay requirements.

Immunogen Information

Gene ID	Swiss Prot
----------------	-------------------

Immunogen

This information is considered to be commercially sensitive.

Synonyms

Product Information

Source	Isotype	Purification
Rabbit	IgG	Protein A/G purification

Storage

Store at -20°C. Avoid freeze / thaw cycles.

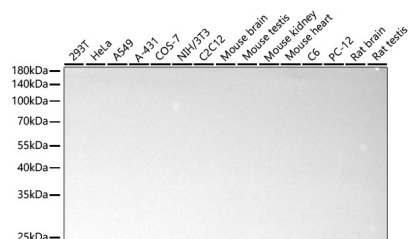
Buffer: PBS with 0.09% sodium azide, 0.05% BSA, 50% glycerol, pH7.3.

Contact

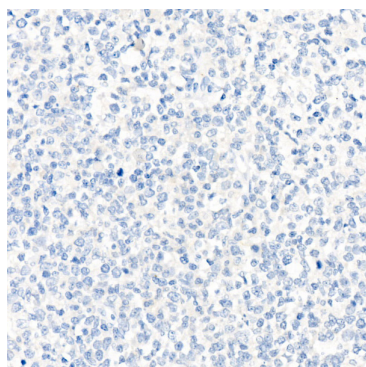


www.abclonal.com

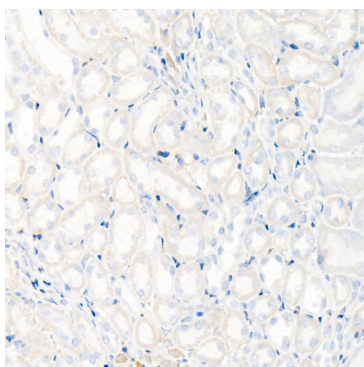
Validation Data



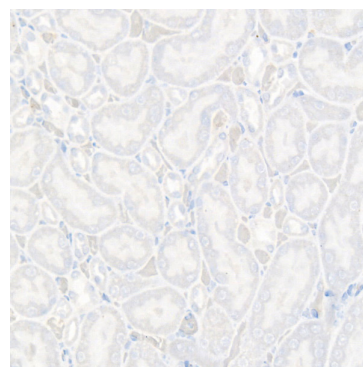
Western blot analysis of various lysates using Rabbit IgG isotype control (AC042) at 1:10000 dilution incubated at room temperature for 1.5 hours.
Secondary antibody: () at 1:10000 dilution.
Lysates/proteins: 25 µg per lane.
Blocking buffer: 3% nonfat dry milk in TBST.
Detection: ECL Basic Kit (RM00020).
Exposure time: 90s.



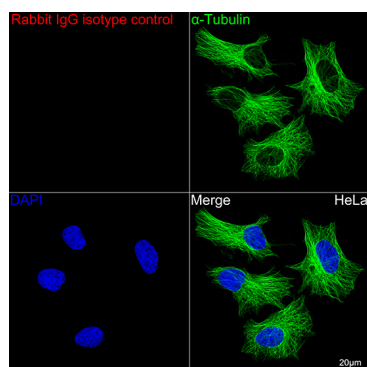
Immunohistochemistry analysis of paraffin-embedded Human tonsil using Rabbit IgG isotype control (AC042) at dilution of 1:100 (40x lens). High pressure antigen retrieval performed with 0.01M Citrate buffer (pH 6.0) prior to IHC staining.



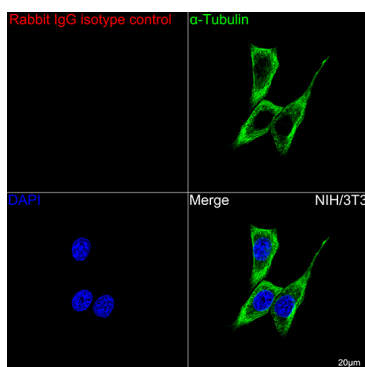
Immunohistochemistry analysis of paraffin-embedded Mouse kidney using Rabbit IgG isotype control (AC042) at dilution of 1:100 (40x lens). High pressure antigen retrieval performed with 0.01M Citrate buffer (pH 6.0) prior to IHC staining.



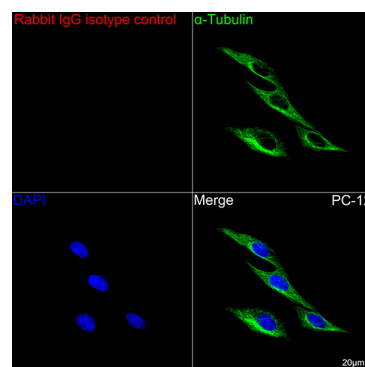
Immunohistochemistry analysis of paraffin-embedded Rat kidney using Rabbit IgG isotype control (AC042) at dilution of 1:100 (40x lens). High pressure antigen retrieval performed with 0.01M Citrate buffer (pH 6.0) prior to IHC staining.



Confocal imaging of HeLa cells using Rabbit IgG isotype control (AC042, dilution 1:200) followed by a further incubation with Cy3 Goat Anti-Rabbit IgG (H+L) (AS007, dilution 1:500) (Red). The cells were counterstained with α-Tubulin Mouse mAb (AC012, dilution 1:400) followed by incubation with ABflo® 488-conjugated Goat Anti-Mouse IgG (H+L) Ab (AS076, dilution 1:500) (Green). DAPI was used for nuclear staining (Blue). Objective: 100x.

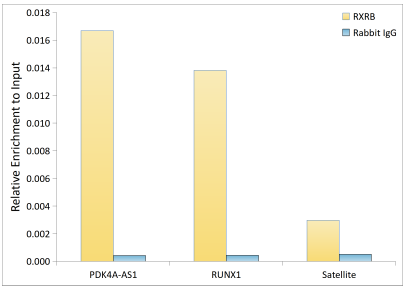


Confocal imaging of NIH/3T3 cells using Rabbit IgG isotype control (AC042, dilution 1:200) followed by a further incubation with Cy3 Goat Anti-Rabbit IgG (H+L) (AS007, dilution 1:500) (Red). The cells were counterstained with α-Tubulin Mouse mAb (AC012, dilution 1:400) followed by incubation with ABflo® 488-conjugated Goat Anti-Mouse IgG (H+L) Ab (AS076, dilution 1:500) (Green). DAPI was used for nuclear staining (Blue). Objective: 100x.

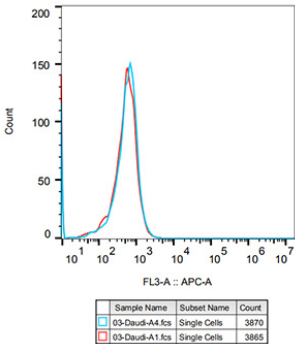


Confocal imaging of PC-12 cells using Rabbit IgG isotype control (AC042, dilution 1:200) followed by a further incubation with Cy3 Goat Anti-Rabbit IgG (H+L) (AS007, dilution 1:500) (Red). The cells were counterstained with α-Tubulin Mouse mAb (AC012, dilution 1:400) followed by incubation with ABflo® 488-conjugated Goat Anti-Mouse IgG (H+L) Ab (AS076, dilution 1:500) (Green). DAPI was used for nuclear staining (Blue). Objective: 100x.

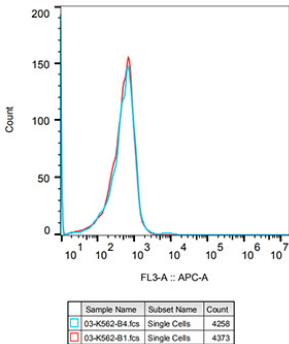
Validation Data



Chromatin immunoprecipitation was performed with 15 µg of cross-linked chromatin from HeLa cells transfected with a RXRB expression vector containing a single C-terminal flag-Tag, using 3 µg of Rabbit IgG isotype control (AC042) and RXRB Rabbit mAb (A25648). The enrichment of immunoprecipitated DNA at different genomic loci was examined by quantitative PCR. The histogram compares the ratio of the immunoprecipitated DNA to the input at given loci.



Flow cytometry: Daudi cells were stained with Rabbit IgG isotype control(AC042, 10 µg/mL, blue line) followed by goat anti-Rabbit pAb APC(1:600 dilution) staining. Non-fluorescently stained Daudi cells was used as blank control (red line).



Flow cytometry: K562 cells were stained with Rabbit IgG isotype control(AC042, 10 µg/mL, blue line) followed by goat anti-Rabbit pAb APC(1:600 dilution) staining. Non-fluorescently stained K562 cells was used as blank control (red line).