

AE009

Leader in Biomolecular Solutions for Life Science



# Rabbit anti Myc-Tag pAb

Catalog No.: AE009

23 Publications

## Basic Information

### Observed MW

60kDa

### Calculated MW

### Category

Polyclonal Antibody

### Applications

WB,IF/ICC,IP

### Cross-Reactivity

Species independent

## Background

Protein tags are peptide sequences genetically grafted onto a recombinant protein. Often these tags are removable by chemical agents or by enzymatic means, such as proteolysis or intein splicing. Tags are attached to proteins for various purposes. Epitope tags are short peptide sequences which are chosen because high-affinity antibodies can be reliably produced in many different species. These are usually derived from viral genes, which explain their high immunoreactivity. Epitope tags include V5-tag, Myc-tag, HA-tag and NE-tag. These tags are particularly useful for western blotting, immunofluorescence and immunoprecipitation experiments, although they also find use in antibody purification.

## Recommended Dilutions

WB	1:2000 - 1:6000
IF/ICC	1:50 - 1:200
IP	0.5µg-4µg antibody for 200µg-400µg extracts of whole cells

## Contact

 [www.abclonal.com](http://www.abclonal.com)

## Immunogen Information

Gene ID	Swiss Prot
---------	------------

### Immunogen

Synthetic peptide. This information is considered to be commercially sensitive.

### Synonyms

Myc;Myc tag;Myc-tag

## Product Information

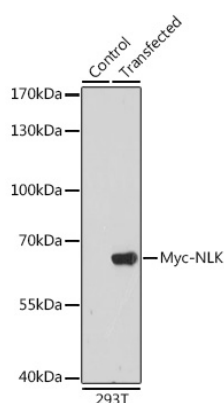
Source	Isotype	Purification
Rabbit	IgG	Affinity purification

### Storage

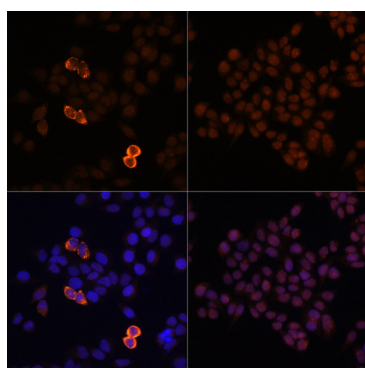
Store at -20°C. Avoid freeze / thaw cycles.

Buffer: PBS containing 50% glycerol, preserved with proclin300 or sodium azide (as specified on the Certificate of Analysis), pH 7.3.

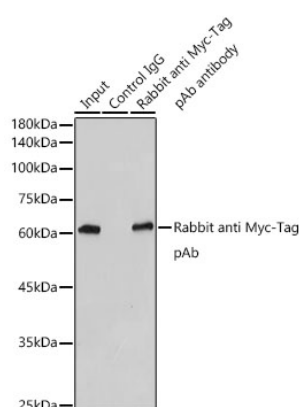
## Validation Data



Western blot analysis of extracts of normal 293T cells and 293T transfected with Myc-NLK protein, using Rabbit anti Myc-Tag pAb (AE009) at 1:5000 dilution.  
 Secondary antibody: HRP-conjugated Goat anti-Rabbit IgG (H+L) (AS014) at 1:10000 dilution.  
 Lysates/proteins: 25µg per lane.  
 Blocking buffer: 3% nonfat dry milk in TBST.  
 Detection: ECL Basic Kit (RM00020).  
 Exposure time: 10s.

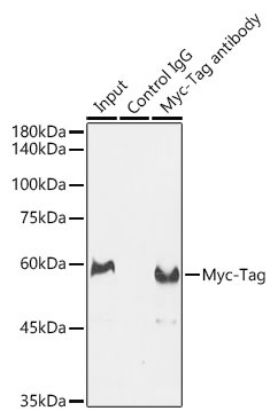


Immunofluorescence analysis of HeLa-Myc-C and HeLa cells using Rabbit anti Myc-Tag pAb (AE009) at dilution of 1:100 (40x lens).  
 Secondary antibody: Cy3-conjugated Goat anti-Rabbit IgG (H+L) (AS007) at 1:500 dilution. Blue: DAPI for nuclear staining.



Immunoprecipitation analysis of 300 µg extracts of 293T cells using 3 µg Rabbit anti Myc-Tag pAb antibody (AE009). Western blot was performed from the immunoprecipitate using Rabbit anti Myc-Tag pAb antibody (AE009) at a dilution of 1:50000.

Validation Data



Immunoprecipitation analysis of 300 µg extracts of 293T-NLK-Myc cells using 3 µg Myc-Tag antibody (AE009). Western blot was performed from the immunoprecipitate using Myc-Tag antibody (AE009) at a dilution of 1:20000.