

AE038

Leader in Biomolecular Solutions for Life Science



# Mouse anti MYC-Tag mAb

Catalog No.: AE038

8 Publications

## Basic Information

### Observed MW

62kDa/75kDa

### Calculated MW

### Category

Monoclonal Antibody

### Applications

WB,IF/ICC,IP,ELISA

### Cross-Reactivity

Species independent

### CloneNo number

AMC0516

## Background

Protein tags are peptide sequences genetically grafted onto a recombinant protein. Often these tags are removable by chemical agents or by enzymatic means, such as proteolysis or intein splicing. Tags are attached to proteins for various purposes. Epitope tags are short peptide sequences which are chosen because high-affinity antibodies can be reliably produced in many different species. These are usually derived from viral genes, which explain their high immunoreactivity. Epitope tags include V5-tag, Myc-tag, HA-tag and NE-tag. These tags are particularly useful for western blotting, immunofluorescence and immunoprecipitation experiments, although they also find use in antibody purification.

## Recommended Dilutions

**WB** 1:2000 - 1:6000

**IF/ICC** 1:200 - 1:2000

**IP** 1:50 - 1:100

**ELISA** Recommended starting concentration is 1 µg/mL. Please optimize the concentration based on your specific assay requirements.

## Immunogen Information

### Gene ID

### Swiss Prot

### Immunogen

Synthetic peptide. This information is considered to be commercially sensitive.

### Synonyms

Myc;Myc tag;Myc-tag

## Product Information

### Source

Mouse

### Isotype

IgG2b,Kappa

### Purification

Affinity purification

### Storage

Store at -20°C. Avoid freeze / thaw cycles.

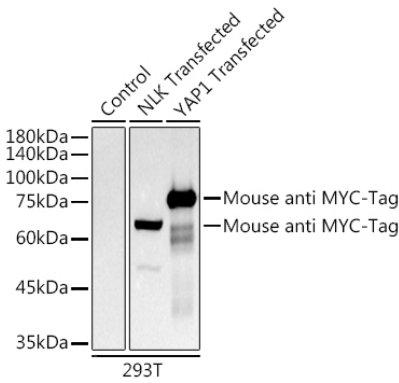
Buffer: PBS with 0.02% sodium azide,50% glycerol,pH7.3.

## Contact

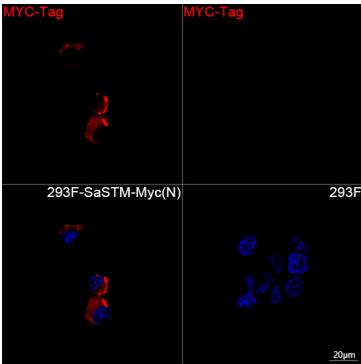


[www.abclonal.com](http://www.abclonal.com)

## Validation Data



Western blot analysis of extracts of normal 293T cells, 293T transfected with NLK Protein and 293T transfected with YAP1 Protein, using Mouse anti MYC-Tag mAb (AE038) at 1:5000 dilution.  
Secondary antibody: HRP-conjugated Goat anti-Mouse IgG (H+L) (AS003) at 1:10000 dilution.  
Lysates/proteins: 25µg per lane.  
Blocking buffer: 3% nonfat dry milk in TBST.  
Detection: ECL Basic Kit (RM00020).  
Exposure time: 10s.



Confocal imaging of 293F cells transfected with MYC-Tag cells using Mouse anti MYC-Tag mAb (AE038, dilution 1:2000) followed by a further incubation with Cy3-conjugated Goat anti-Mouse IgG (H+L) (AS008, dilution 1:500) (Red). DAPI was used for nuclear staining (Blue). Objective: 100x.