

AP0040

Leader in Biomolecular Solutions for Life Science



# Phospho-HSP27/HSPB1-S15 Rabbit pAb

Catalog No.: AP0040

1 Publications

## Basic Information

### Observed MW

27kDa

### Calculated MW

23kDa

### Category

Polyclonal Antibody

### Applications

WB,IP,ELISA

### Cross-Reactivity

Human

## Background

This gene encodes a member of the small heat shock protein (HSP20) family of proteins. In response to environmental stress, the encoded protein translocates from the cytoplasm to the nucleus and functions as a molecular chaperone that promotes the correct folding of other proteins. This protein plays an important role in the differentiation of a wide variety of cell types. Expression of this gene is correlated with poor clinical outcome in multiple human cancers, and the encoded protein may promote cancer cell proliferation and metastasis, while protecting cancer cells from apoptosis. Mutations in this gene have been identified in human patients with Charcot-Marie-Tooth disease and distal hereditary motor neuropathy.

## Recommended Dilutions

**WB** 1:500 - 1:1000

**IP** 0.5µg-4µg antibody for  
200µg-400µg extracts  
of whole cells

**ELISA** Recommended starting  
concentration is 1  
µg/mL. Please optimize  
the concentration  
based on your specific  
assay requirements.

## Immunogen Information

### Gene ID

3315

### Swiss Prot

P04792

### Immunogen

Synthetic peptide. This information is considered to be commercially sensitive.

### Synonyms

CMT2F; HMN2B; HSP27; HSP28; Hsp25; SRP27; HS.76067; HEL-S-102; Phospho-HSP27/HSPB1-S15

## Product Information

### Source

Rabbit

### Isotype

IgG

### Purification

Affinity purification

### Storage

Store at -20°C. Avoid freeze / thaw cycles.

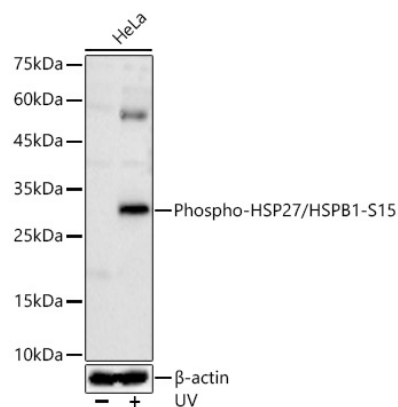
Buffer: PBS containing 50% glycerol, preserved with proclin300 or sodium azide (as specified on the Certificate of Analysis), pH 7.3.

## Contact

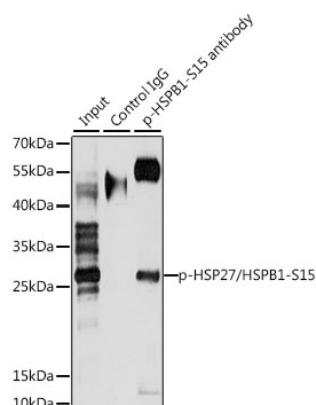


[www.abclonal.com](http://www.abclonal.com)

## Validation Data



Western blot analysis of lysates from HeLa cells, using Phospho-HSP27/HSPB1-S15 Rabbit pAb (AP0040) at 1:600 dilution. HeLa cells were treated with UV at room temperature for 15-30 minutes. Secondary antibody: HRP-conjugated Goat anti-Rabbit IgG (H+L) (AS014) at 1:10000 dilution. Lysates/proteins: 25µg per lane. Blocking buffer: 3% nonfat dry milk in TBST. Detection: ECL Basic Kit (RM00020). Exposure time: 30s.



Immunoprecipitation analysis of 200 µg extracts of HeLa cells, using 3 µg Phospho-HSP27/HSPB1-S15 pAb (AP0040). Western blot was performed from the immunoprecipitate using Phospho-HSP27/HSPB1-S15 pAb (AP0040) at a dilution of 1:1000. HeLa cells were treated with EGF (100 ng/mL) at 37°C for 30 minutes after serum-starvation overnight.