

AP0077

Leader in Biomolecular Solutions for Life Science



Phospho-MET-Y1349 Rabbit pAb

Catalog No.: AP0077

4 Publications

Basic Information

Observed MW

160kDa

Calculated MW

156kDa

Category

Polyclonal Antibody

Applications

WB, ELISA

Cross-Reactivity

Human, Rat

Background

This gene encodes a member of the receptor tyrosine kinase family of proteins and the product of the proto-oncogene MET. The encoded preproprotein is proteolytically processed to generate alpha and beta subunits that are linked via disulfide bonds to form the mature receptor. Further processing of the beta subunit results in the formation of the M10 peptide, which has been shown to reduce lung fibrosis. Binding of its ligand, hepatocyte growth factor, induces dimerization and activation of the receptor, which plays a role in cellular survival, embryogenesis, and cellular migration and invasion. Mutations in this gene are associated with papillary renal cell carcinoma, hepatocellular carcinoma, and various head and neck cancers. Amplification and overexpression of this gene are also associated with multiple human cancers.

Recommended Dilutions

WB 1:500 - 1:2000**ELISA** Recommended starting concentration is 1 µg/mL. Please optimize the concentration based on your specific assay requirements.

Immunogen Information

Gene ID

4233

Swiss Prot

P08581

Immunogen

Synthetic peptide. This information is considered to be commercially sensitive.

Synonyms

DA11; HGFR; AUTS9; RCCP2; c-Met; DFNB97; Phospho-MET-Y1349

Contact

www.abclonal.com

Product Information

Source

Rabbit

Isotype

IgG

Purification

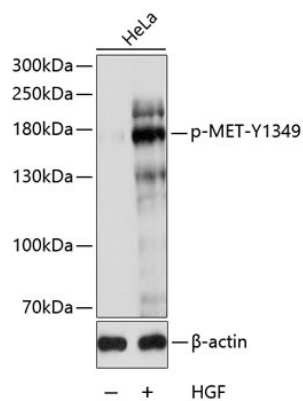
Affinity purification

Storage

Store at -20°C. Avoid freeze / thaw cycles.

Buffer: PBS with 0.02% sodium azide, 50% glycerol, pH 7.3.

Validation Data



Western blot analysis of lysates from HeLa cells, using Phospho-MET-Y1349 Rabbit pAb (AP0077) at 1:1000 dilution. HeLa cells were treated with HGF (40ng/mL) for 10 minutes after serum-starvation overnight.

Secondary antibody: HRP-conjugated Goat anti-Rabbit IgG (H+L) (AS014) at 1:10000 dilution.

Lysates/proteins: 25μg per lane.

Blocking buffer: 3% BSA.

Detection: ECL Basic Kit (RM00020).

Exposure time: 90s.