

AP0137

Leader in Biomolecular Solutions for Life Science



Phospho-STAT4-Y693 Rabbit pAb

Catalog No.: AP0137

1 Publications

Basic Information

Observed MW

81kDa

Calculated MW

86kDa

Category

Polyclonal Antibody

Applications

WB,IHC-P,ELISA

Cross-Reactivity

Human,Mouse,Rat

Background

The protein encoded by this gene is a member of the STAT family of transcription factors. In response to cytokines and growth factors, STAT family members are phosphorylated by the receptor associated kinases, and then form homo- or heterodimers that translocate to the cell nucleus where they act as transcription activators. This protein is essential for mediating responses to IL12 in lymphocytes, and regulating the differentiation of T helper cells. Mutations in this gene may be associated with systemic lupus erythematosus and rheumatoid arthritis. Alternate splicing results in multiple transcript variants that encode the same protein.

Recommended Dilutions

WB 1:100 - 1:500

IHC-P 1:50 - 1:100

ELISA Recommended starting concentration is 1 µg/mL. Please optimize the concentration based on your specific assay requirements.

Immunogen Information

Gene ID

6775

Swiss Prot

Q14765

Immunogen

Synthetic peptide. This information is considered to be commercially sensitive.

Synonyms

SLEB11; Phospho-STAT4-Y693

Contact

 www.abclonal.com

Product Information

Source

Rabbit

Isotype

IgG

Purification

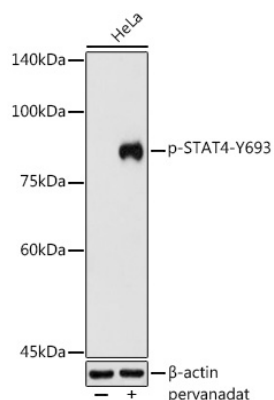
Affinity purification

Storage

Store at -20°C. Avoid freeze / thaw cycles.

Buffer: PBS containing 50% glycerol, preserved with proclin300 or sodium azide (as specified on the Certificate of Analysis), pH 7.3.

Validation Data



Western blot analysis of lysates from HeLa cells, using Phospho-STAT4-Y693 Rabbit pAb (AP0137) at 1:500 dilution. HeLa cells were treated with Pervanadate (1 nM) at 37°C for 30 minutes after serum-starvation overnight.

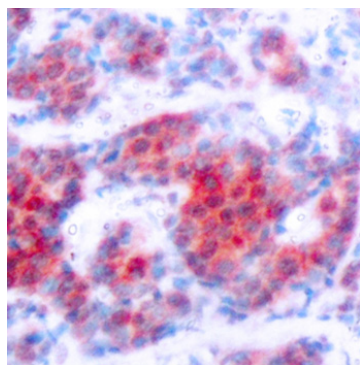
Secondary antibody: HRP-conjugated Goat anti-Rabbit IgG (H+L) (AS014) at 1:10000 dilution.

Lysates/proteins: 25µg per lane.

Blocking buffer: 3% nonfat dry milk in TBST.

Detection: ECL Basic Kit (RM00020).

Exposure time: 30s.



Immunohistochemistry analysis of paraffin-embedded Human breast carcinoma using Phospho-STAT4-Y693 Rabbit pAb (AP0137).

Microwave antigen retrieval performed with 0.01M Tris/EDTA Buffer (pH 9.0) prior to IHC staining.