

AP0196

Leader in Biomolecular Solutions for Life Science



Phospho-ADD1-S726 Rabbit pAb

Catalog No.: AP0196

Basic Information

Observed MW

130kDa

Calculated MW

81kDa

Category

Polyclonal Antibody

Applications

WB,IF/ICC

Cross-Reactivity

Human,Mouse,Rat

Background

Adducins are a family of cytoskeletal proteins encoded by three genes (alpha, beta, and gamma). Adducin acts as a heterodimer of the related alpha, beta, or gamma subunits. The protein encoded by this gene represents the alpha subunit. Alpha- and beta-adducin include a protease-resistant N-terminal region and a protease-sensitive, hydrophilic C-terminal region. Adducin binds with high affinity to Ca(2+)/calmodulin and is a substrate for protein kinases A and C.

Recommended Dilutions

WB 1:500 - 1:2000

IF/ICC 1:100 - 1:200

Immunogen Information

Gene ID

118

Swiss Prot

P35611

Immunogen

Synthetic peptide. This information is considered to be commercially sensitive.

Synonyms

ADDA; Phospho-ADD1-S726

Contact



www.abclonal.com

Product Information

Source

Rabbit

Isotype

IgG

Purification

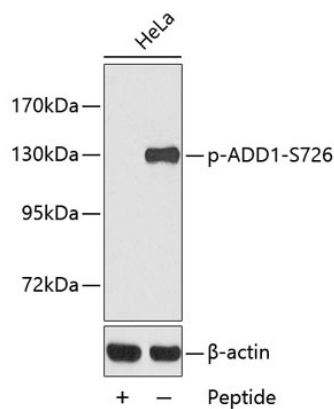
Affinity purification

Storage

Store at -20°C. Avoid freeze / thaw cycles.

Buffer: PBS with 0.02% sodium azide, 50% glycerol, pH7.3.

Validation Data



Western blot analysis of lysates from HeLa cells using Phospho-ADD1-S726 Rabbit pAb (AP0196).
Secondary antibody: HRP-conjugated Goat anti-Rabbit IgG (H+L) (AS014) at 1:10000 dilution.
Lysates/proteins: 25µg per lane.
Blocking buffer: 3% BSA.