

AP0234

Leader in Biomolecular Solutions for Life Science



# Phospho-ERK1-T202 + ERK2-T185 Rabbit pAb

Catalog No.: AP0234

6 Publications

## Basic Information

### Observed MW

42kDa/44kDa

### Calculated MW

38kDa/40kDa/43kDa

### Category

Polyclonal Antibody

### Applications

WB,IHC-P,IF/ICC,ELISA

### Cross-Reactivity

Human,Mouse,Rat

## Background

The protein encoded by this gene is a member of the MAP kinase family. MAP kinases, also known as extracellular signal-regulated kinases (ERKs), act in a signaling cascade that regulates various cellular processes such as proliferation, differentiation, and cell cycle progression in response to a variety of extracellular signals. This kinase is activated by upstream kinases, resulting in its translocation to the nucleus where it phosphorylates nuclear targets. Alternatively spliced transcript variants encoding different protein isoforms have been described.

## Recommended Dilutions

**WB** 1:500 - 1:1000

**IHC-P** 1:50 - 1:100

**IF/ICC** 1:20 - 1:100

**ELISA** Recommended starting concentration is 1 µg/mL. Please optimize the concentration based on your specific assay requirements.

## Immunogen Information

### Gene ID

5594/5595

### Swiss Prot

P28482/P27361

### Immunogen

Synthetic peptide. This information is considered to be commercially sensitive.

### Synonyms

## Product Information

### Source

Rabbit

### Isotype

IgG

### Purification

Affinity purification

### Storage

Store at -20°C. Avoid freeze / thaw cycles.

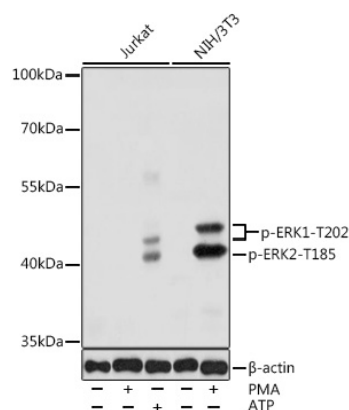
Buffer: PBS with 0.02% sodium azide, 50% glycerol, pH7.3.

## Contact



[www.abclonal.com](http://www.abclonal.com)

## Validation Data



Western blot analysis of various lysates using Phospho-ERK1-T202 + ERK2-T185 Rabbit pAb (AP0234) at 1:1000 dilution. Jurkat and NIH/3T3 cells were treated with PMA/TPA (200 nM) at 37°C for 30 minutes after serum-starvation overnight. Jurkat cells were treated with ATP(5 mM) at 30°C for 1 hour.

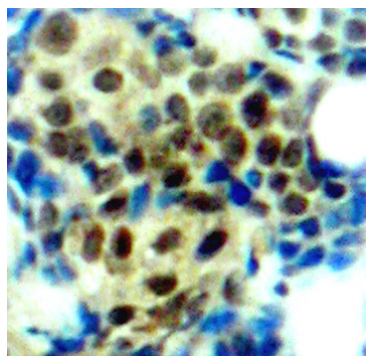
Secondary antibody: HRP-conjugated Goat anti-Rabbit IgG (H+L) (AS014) at 1:10000 dilution.

Lysates/proteins: 25µg per lane.

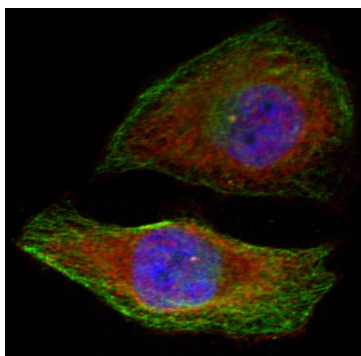
Blocking buffer: 3% nonfat dry milk in TBST.

Detection: ECL Basic Kit (RM00020).

Exposure time: 1s.



Immunohistochemistry analysis of paraffin-embedded Human breast carcinoma tissue, using Phospho-ERK1-T202 + ERK2-T185 Rabbit pAb (AP0234). Microwave antigen retrieval performed with 0.01M Tris/EDTA Buffer (pH 9.0) prior to IHC staining.



Immunofluorescence analysis of methanol-fixed HeLa cells showing cytoplasmic, nuclear staining using Phospho-ERK1-T202 + ERK2-T185 Rabbit pAb (AP0234).