

AP0316

Leader in Biomolecular Solutions for Life Science



Phospho-Bcl-2-T56 Rabbit pAb

Catalog No.: AP0316

1 Publications

Basic Information

Observed MW

Refer to figures

Calculated MW

26kDa

Category

Polyclonal Antibody

Applications

WB,IHC-P,ELISA

Cross-Reactivity

Human,Mouse,Rat

Background

This gene encodes an integral outer mitochondrial membrane protein that blocks the apoptotic death of some cells such as lymphocytes. Constitutive expression of BCL2, such as in the case of translocation of BCL2 to Ig heavy chain locus, is thought to be the cause of follicular lymphoma. Alternative splicing results in multiple transcript variants.

Recommended Dilutions

WB 1:500 - 1:2000

IHC-P 1:50 - 1:100

ELISA Recommended starting concentration is 1 µg/mL. Please optimize the concentration based on your specific assay requirements.

Immunogen Information

Gene ID
596

Swiss Prot
P10415

Immunogen

Synthetic peptide. This information is considered to be commercially sensitive.

Synonyms

Bcl-2; PPP1R50; Phospho-Bcl-2-T56

Contact

 www.abclonal.com

Product Information

Source
Rabbit

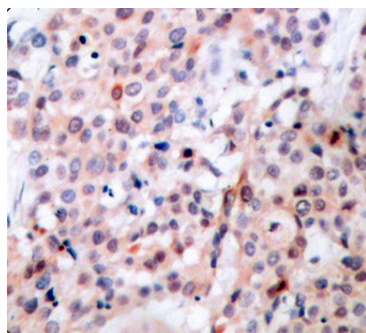
Isotype
IgG

Purification
Affinity purification

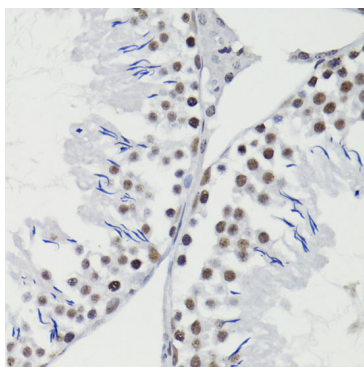
Storage

Store at -20°C. Avoid freeze / thaw cycles.

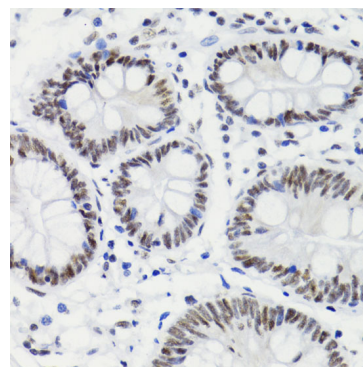
Buffer: PBS with 0.01% thimerosal, 50% glycerol, pH7.3.



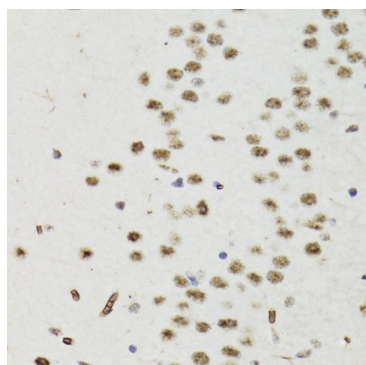
Immunohistochemistry analysis of paraffin-embedded Human breast carcinoma tissue, using Phospho-Bcl-2-T56 Rabbit pAb (AP0316). Microwave antigen retrieval performed with 0.01M Tris/EDTA Buffer (pH 9.0) prior to IHC staining.



Immunohistochemistry analysis of paraffin-embedded Rat testis using Phospho-Bcl-2-T56 Rabbit pAb (AP0316) at dilution of 1:200 (40x lens). Microwave antigen retrieval performed with 0.01M PBS Buffer (pH 7.2) prior to IHC staining.



Immunohistochemistry analysis of paraffin-embedded Human stomach using Phospho-Bcl-2-T56 Rabbit pAb (AP0316) at dilution of 1:200 (40x lens). Microwave antigen retrieval performed with 0.01M PBS Buffer (pH 7.2) prior to IHC staining.



Immunohistochemistry analysis of paraffin-embedded Mouse brain using Phospho-Bcl-2-T56 Rabbit pAb (AP0316) at dilution of 1:200 (40x lens). Microwave antigen retrieval performed with 0.01M PBS Buffer (pH 7.2) prior to IHC staining.