

AP0333

Leader in Biomolecular Solutions for Life Science



# Phospho-CREB1-S133 Rabbit pAb

Catalog No.: AP0333

8 Publications

## Basic Information

### Observed MW

40kDa

### Calculated MW

35kDa

### Category

Polyclonal Antibody

### Applications

WB,IHC-P,ELISA

### Cross-Reactivity

Human,Mouse,Rat

## Background

This gene encodes a transcription factor that is a member of the leucine zipper family of DNA binding proteins. This protein binds as a homodimer to the cAMP-responsive element, an octameric palindrome. The protein is phosphorylated by several protein kinases, and induces transcription of genes in response to hormonal stimulation of the cAMP pathway. Alternate splicing of this gene results in several transcript variants encoding different isoforms.

## Recommended Dilutions

**WB** 1:500 - 1:1000

**IHC-P** 1:50 - 1:100

**ELISA** Recommended starting concentration is 1 µg/mL. Please optimize the concentration based on your specific assay requirements.

## Immunogen Information

### Gene ID

1385

### Swiss Prot

P16220

### Immunogen

Synthetic peptide. This information is considered to be commercially sensitive.

### Synonyms

CREB; CREB-1; Phospho-CREB1-S133

## Contact



[www.abclonal.com](http://www.abclonal.com)

## Product Information

### Source

Rabbit

### Isotype

IgG

### Purification

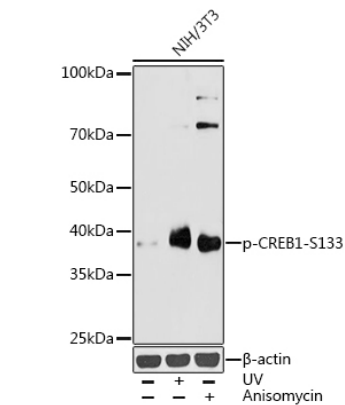
Affinity purification

### Storage

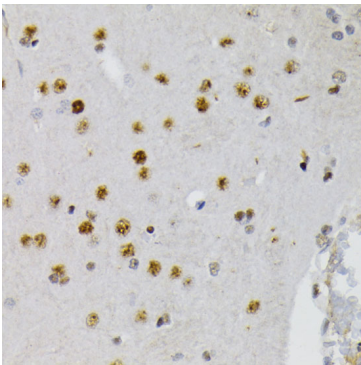
Store at -20°C. Avoid freeze / thaw cycles.

Buffer: PBS with 0.09% Sodium azide,50% glycerol,pH7.3.

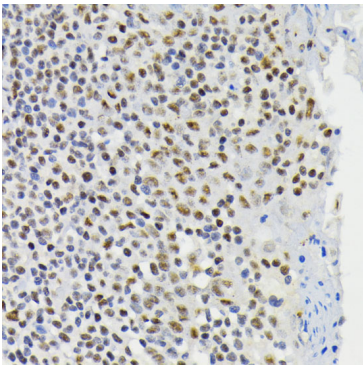
Validation Data



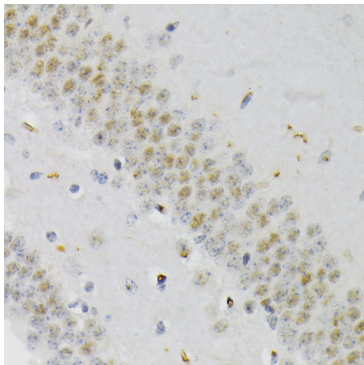
Western blot analysis of lysates from NIH/3T3 cells, using Phospho-CREB1-S133 Rabbit pAb (AP0333) at 1:1000 dilution. NIH/3T3 cells were treated with UV at room temperature for 15-30 minutes or treated with Anisomycin (25 µg/mL) at 37°C for 30 minutes.  
Secondary antibody: HRP-conjugated Goat anti-Rabbit IgG (H+L) (AS014) at 1:10000 dilution.  
Lysates/proteins: 25µg per lane.  
Blocking buffer: 3% nonfat dry milk in TBST.  
Detection: ECL Basic Kit (RM00020).  
Exposure time: 180s.



Immunohistochemistry analysis of paraffin-embedded Rat brain using Phospho-CREB1-S133 Rabbit pAb (AP0333) at dilution of 1:200 (40x lens). Microwave antigen retrieval performed with 0.01M Tris/EDTA Buffer (pH 9.0) prior to IHC staining.



Immunohistochemistry analysis of paraffin-embedded Human tonsil using Phospho-CREB1-S133 Rabbit pAb (AP0333) at dilution of 1:200 (40x lens). Microwave antigen retrieval performed with 0.01M Tris/EDTA Buffer (pH 9.0) prior to IHC staining.



Immunohistochemistry analysis of paraffin-embedded Mouse brain using Phospho-CREB1-S133 Rabbit pAb (AP0333) at dilution of 1:200 (40x lens). Microwave antigen retrieval performed with 0.01M Tris/EDTA Buffer (pH 9.0) prior to IHC staining.