

AP0387

Leader in Biomolecular Solutions for Life Science



Phospho-LIMK1-T508 Rabbit pAb

Catalog No.: AP0387

2 Publications

Basic Information

Observed MW

73kDa

Calculated MW

73kDa

Category

Polyclonal Antibody

Applications

WB,IHC-P,IF/ICC,ELISA

Cross-Reactivity

Human,Mouse,Rat

Background

There are approximately 40 known eukaryotic LIM proteins, so named for the LIM domains they contain. LIM domains are highly conserved cysteine-rich structures containing 2 zinc fingers. Although zinc fingers usually function by binding to DNA or RNA, the LIM motif probably mediates protein-protein interactions. LIM kinase-1 and LIM kinase-2 belong to a small subfamily with a unique combination of 2 N-terminal LIM motifs and a C-terminal protein kinase domain. LIMK1 is a serine/threonine kinase that regulates actin polymerization via phosphorylation and inactivation of the actin binding factor cofilin. This protein is ubiquitously expressed during development and plays a role in many cellular processes associated with cytoskeletal structure. This protein also stimulates axon growth and may play a role in brain development. LIMK1 hemizyosity is implicated in the impaired visuospatial constructive cognition of Williams syndrome. Alternative splicing results in multiple transcript variants encoding distinct isoforms.

Recommended Dilutions

WB 1:500 - 1:2000

IHC-P 1:50 - 1:100

IF/ICC 1:100 - 1:200

ELISA Recommended starting concentration is 1 µg/mL. Please optimize the concentration based on your specific assay requirements.

Immunogen Information

Gene ID

3984

Swiss Prot

P53667

Immunogen

Synthetic peptide. This information is considered to be commercially sensitive.

Synonyms

LIMK; LIMK-1; Phospho-LIMK1-T508

Product Information

Source

Rabbit

Isotype

IgG

Purification

Affinity purification

Storage

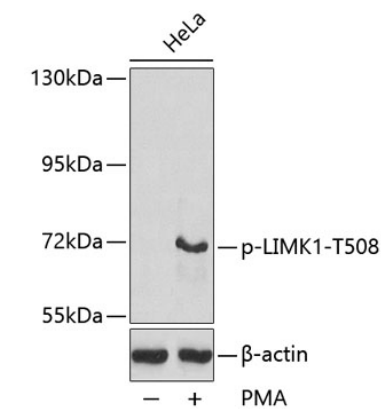
Store at -20°C. Avoid freeze / thaw cycles.

Buffer: PBS with 0.09% Sodium azide, 50% glycerol, pH7.3.

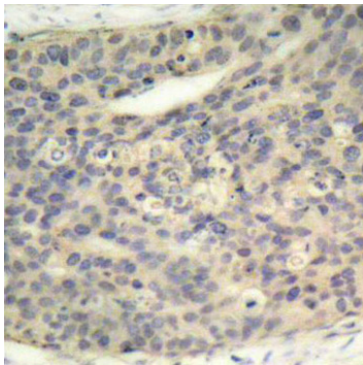
Contact

www.abclonal.com

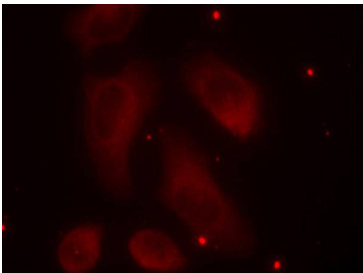
Validation Data



Western blot analysis of lysates from HeLa cells, using Phospho-LIMK1-T508 Rabbit pAb (AP0387).



Immunohistochemistry analysis of paraffin-embedded Human breast carcinoma using Phospho-LIMK1-T508 Rabbit pAb (AP0387).
Microwave antigen retrieval performed with 0.01M Tris/EDTA Buffer (pH 9.0) prior to IHC staining.



Immunofluorescence analysis of methanol-fixed HeLa cells using Phospho-LIMK1-T508 Rabbit pAb (AP0387).