

AP0421

Leader in Biomolecular Solutions for Life Science



# Phospho-eNOS-S1177 Rabbit pAb

Catalog No.: AP0421

3 Publications

## Basic Information

### Observed MW

133kDa

### Calculated MW

133kDa

### Category

Polyclonal Antibody

### Applications

WB,ELISA

### Cross-Reactivity

Human

## Background

Nitric oxide is a reactive free radical which acts as a biologic mediator in several processes, including neurotransmission and antimicrobial and antitumoral activities. Nitric oxide is synthesized from L-arginine by nitric oxide synthases. Variations in this gene are associated with susceptibility to coronary spasm. Alternative splicing and the use of alternative promoters results in multiple transcript variants.

## Recommended Dilutions

**WB** 1:500 - 1:1000

**ELISA** Recommended starting concentration is 1 µg/mL. Please optimize the concentration based on your specific assay requirements.

## Immunogen Information

### Gene ID

4846

### Swiss Prot

P29474

### Immunogen

Synthetic peptide. This information is considered to be commercially sensitive.

### Synonyms

eNOS; ECNOS; Phospho-eNOS-S1177

## Contact

 [www.abclonal.com](http://www.abclonal.com)

## Product Information

### Source

Rabbit

### Isotype

IgG

### Purification

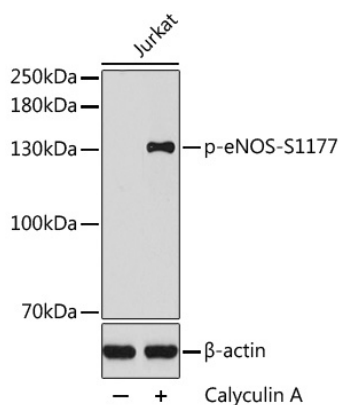
Affinity purification

### Storage

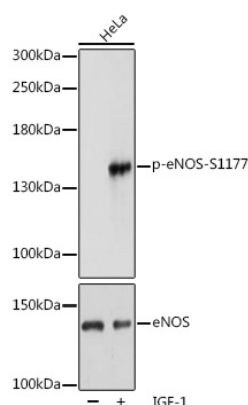
Store at -20°C. Avoid freeze / thaw cycles.

Buffer: PBS with 0.09% Sodium azide, 50% glycerol, pH7.3.

## Validation Data



Western blot analysis of lysates from Jurkat cells, using Phospho-eNOS-S1177 Rabbit pAb (AP0421). Jurkat cells were treated with Calyculin A. Secondary antibody: HRP-conjugated Goat anti-Rabbit IgG (H+L) (AS014) at 1:10000 dilution. Lysates/proteins: 25µg per lane. Blocking buffer: 3% BSA.



Western blot analysis of lysates from HeLa cells, using Phospho-eNOS-S1177 Rabbit pAb (A1548). HeLa cells were treated with IGF-1 (50 ng/mL) at 37°C for 30 minutes after serum-starvation overnight. Secondary antibody: HRP-conjugated Goat anti-Rabbit IgG (H+L) (AS014) at 1:10000 dilution. Lysates/proteins: 25µg per lane. Blocking buffer: 3% BSA. Detection: ECL Basic Kit (RM00020). Exposure time: 3min.