

AP0496

Leader in Biomolecular Solutions for Life Science



Phospho-PKC delta-Y311 Rabbit pAb

Catalog No.: AP0496

Basic Information

Observed MW

78kDa

Calculated MW

78kDa

Category

Polyclonal Antibody

Applications

WB,ELISA

Cross-Reactivity

Human,Mouse

Background

The protein encoded by this gene is a member of the protein kinase C family of serine- and threonine-specific protein kinases. The encoded protein is activated by diacylglycerol and is both a tumor suppressor and a positive regulator of cell cycle progression. Also, this protein can positively or negatively regulate apoptosis. Defects in this gene are a cause of autoimmune lymphoproliferative syndrome.

Recommended Dilutions

WB 1:500 - 1:2000

ELISA Recommended starting concentration is 1 µg/mL. Please optimize the concentration based on your specific assay requirements.

Immunogen Information

Gene ID
5580

Swiss Prot
Q05655

Immunogen

Synthetic peptide. This information is considered to be commercially sensitive.

Synonyms

MAY1; PKCD; ALPS3; CVID9; nPKC-delta; Phospho-PKC delta-Y311

Contact

 www.abclonal.com

Product Information

Source
Rabbit

Isotype
IgG

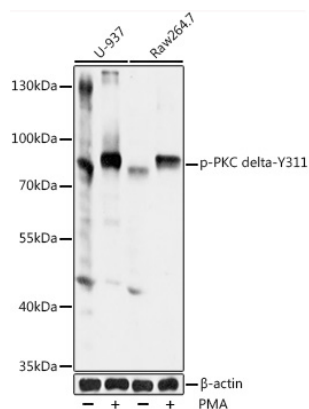
Purification
Affinity purification

Storage

Store at -20°C. Avoid freeze / thaw cycles.

Buffer: PBS with 0.02% sodium azide,50% glycerol,pH7.3.

Validation Data



Western blot analysis of lysates from U937 and Raw264.7 cells, using Phospho-PKC delta-Y311 Rabbit pAb (AP0496) at 1:1000 dilution. U-937 cells were treated with PMA/TPA (200nM) for 30 minutes. RAW 264.7 cells were treated with PMA (200 nM) for 30 minutes .

Secondary antibody: HRP-conjugated Goat anti-Rabbit IgG (H+L) (AS014) at 1:10000 dilution.

Lysates/proteins: 25µg per lane.

Blocking buffer: 3% BSA.

Detection: ECL Basic Kit (RM00020).

Exposure time: 60s.