

AP0551

Leader in Biomolecular Solutions for Life Science



Phospho-IRS1-S636/639 Rabbit pAb

Catalog No.: AP0551

1 Publications

Basic Information

Observed MW

180kDa

Calculated MW

132kDa

Category

Polyclonal Antibody

Applications

WB,ELISA

Cross-Reactivity

Human

Background

This gene encodes a protein which is phosphorylated by insulin receptor tyrosine kinase. Mutations in this gene are associated with type II diabetes and susceptibility to insulin resistance.

Recommended Dilutions

WB 1:100 - 1:500

ELISA Recommended starting concentration is 1 µg/mL. Please optimize the concentration based on your specific assay requirements.

Immunogen Information

Gene ID

3667

Swiss Prot

P35568

Immunogen

Synthetic peptide. This information is considered to be commercially sensitive.

Synonyms

HIRS-1; Phospho-IRS1-S636/639

Contact



www.abclonal.com

Product Information

Source

Rabbit

Isotype

IgG

Purification

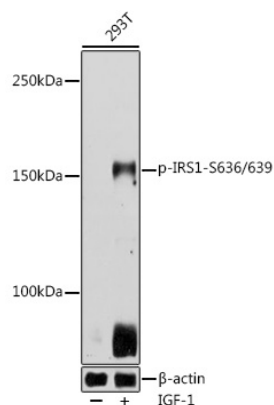
Affinity purification

Storage

Store at -20°C. Avoid freeze / thaw cycles.

Buffer: PBS with 0.01% thimerosal, 50% glycerol, pH7.3.

Validation Data



Western blot analysis of lysates from 293T cells, using Phospho-IRS1-S636/639 Rabbit pAb (AP0551) at 1:500 dilution. 293T cells were treated with IGF-1 (50 ng/ml) at 37°C for 5 minutes after serum-starvation overnight.

Secondary antibody: HRP-conjugated Goat anti-Rabbit IgG (H+L) (AS014) at 1:10000 dilution.

Lysates/proteins: 25µg per lane.

Blocking buffer: 3% nonfat dry milk in TBST.

Detection: ECL Basic Kit (RM00020).

Exposure time: 10s.