

AP0552

Leader in Biomolecular Solutions for Life Science



Phospho-IRS1-S307(Human Specific) Rabbit pAb

Catalog No.: AP0552

11 Publications

Basic Information

Observed MW

180kDa

Calculated MW

132kDa

Category

Polyclonal Antibody

Applications

WB,IHC-P,ELISA

Cross-Reactivity

Human,Mouse,Rat

Background

This gene encodes a protein which is phosphorylated by insulin receptor tyrosine kinase. Mutations in this gene are associated with type II diabetes and susceptibility to insulin resistance.

Recommended Dilutions

WB 1:500 - 1:1000

IHC-P 1:1000 - 1:5000

ELISA Recommended starting concentration is 1 µg/mL. Please optimize the concentration based on your specific assay requirements.

Immunogen Information

Gene ID

3667

Swiss Prot

P35568

Immunogen

Synthetic peptide. This information is considered to be commercially sensitive.

Synonyms

HIRS-1; Phospho-IRS1-S307(Human Specific)

Contact

 www.abclonal.com

Product Information

Source

Rabbit

Isotype

IgG

Purification

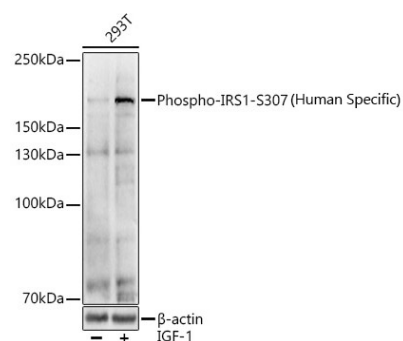
Affinity purification

Storage

Store at -20°C. Avoid freeze / thaw cycles.

Buffer: PBS containing 50% glycerol, preserved with proclin300 or sodium azide (as specified on the Certificate of Analysis), pH 7.3.

Validation Data



Western blot analysis of various lysates using Phospho-IRS1-S307(Human Specific) Rabbit pAb (AP0552) at 1:1000 dilution. 293T cells were treated with IGF-1 (50 ng/ml) at 37°C for 5 minutes after serum-starvation overnight.

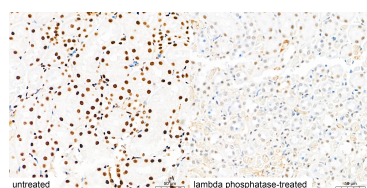
Secondary antibody: HRP-conjugated Goat anti-Rabbit IgG (H+L) (AS014) at 1:10000 dilution.

Lysates/proteins: 25µg per lane.

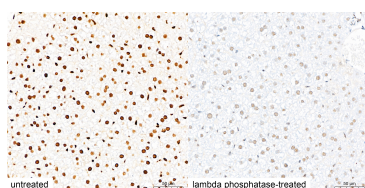
Blocking buffer: 3% nonfat dry milk in TBST.

Detection: ECL Basic Kit (RM00020).

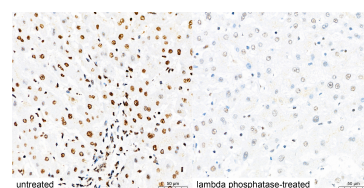
Exposure time: 30s.



Immunohistochemistry analysis of paraffin-embedded Rat kidney tissue using Phospho-IRS1-S307(Human Specific) Rabbit pAb (AP0552) at a dilution of 1:1600 (40x lens). High pressure antigen retrieval performed with 0.01M Citrate Buffer(pH 6.0) prior to IHC staining.



Immunohistochemistry analysis of paraffin-embedded Mouse liver tissue using Phospho-IRS1-S307(Human Specific) Rabbit pAb (AP0552) at a dilution of 1:1600 (40x lens). High pressure antigen retrieval performed with 0.01M Citrate Buffer(pH 6.0) prior to IHC staining.



Immunohistochemistry analysis of paraffin-embedded Human liver tissue using Phospho-IRS1-S307(Human Specific) Rabbit pAb (AP0552) at a dilution of 1:1600 (40x lens). High pressure antigen retrieval performed with 0.01M Citrate Buffer(pH 6.0) prior to IHC staining.