

AP0564

Leader in Biomolecular Solutions for Life Science



Phospho-p70 S6 Kinase 1-T389 Rabbit pAb

Catalog No.: AP0564

44 Publications

Basic Information

Observed MW

70kDa/85kDa

Calculated MW

59kDa

Category

Polyclonal Antibody

Applications

WB,IF/ICC,ELISA

Cross-Reactivity

Human,Mouse,Rat

Background

This gene encodes a member of the ribosomal S6 kinase family of serine/threonine kinases. The encoded protein responds to mTOR (mammalian target of rapamycin) signaling to promote protein synthesis, cell growth, and cell proliferation. Activity of this gene has been associated with human cancer. Alternatively spliced transcript variants have been observed. The use of alternative translation start sites results in isoforms with longer or shorter N-termini which may differ in their subcellular localizations. There are two pseudogenes for this gene on chromosome 17.

Recommended Dilutions

WB 1:500 - 1:1000

IF/ICC 1:50 - 1:200

ELISA Recommended starting concentration is 1 µg/mL. Please optimize the concentration based on your specific assay requirements.

Immunogen Information

Gene ID

6198

Swiss Prot

P23443

Immunogen

Synthetic peptide. This information is considered to be commercially sensitive.

Synonyms

S6K; PS6K; S6K1; STK14A; p70-S6K; p70 S6KA; p70-alpha; S6K-beta-1; p70(S6K)-alpha; Phospho-p70 S6 Kinase 1-T389

Contact

 www.abclonal.com

Product Information

Source

Rabbit

Isotype

IgG

Purification

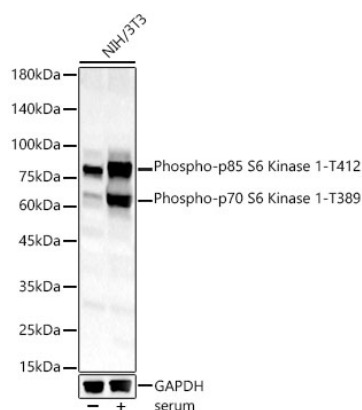
Affinity purification

Storage

Store at -20°C. Avoid freeze / thaw cycles.

Buffer: PBS with 0.02% sodium azide, 50% glycerol, pH7.3.

Validation Data



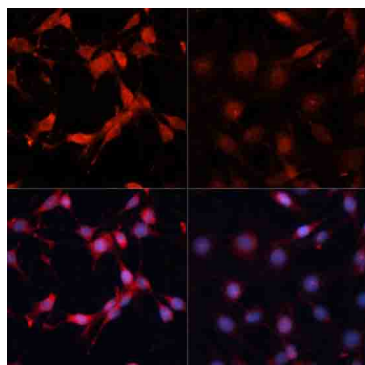
Western blot analysis of lysates from NIH/3T3 cells, using Phospho-p70 S6 Kinase 1-T389 Rabbit pAb (AP0564) at 1:1000 dilution. NIH/3T3 cells were treated with 10% FBS at 37°C for 30 minutes after serum-starvation overnight. Secondary antibody: HRP-conjugated Goat anti-Rabbit IgG (H+L) (AS014) at 1:10000 dilution.

Lysates/proteins: 25µg per lane.

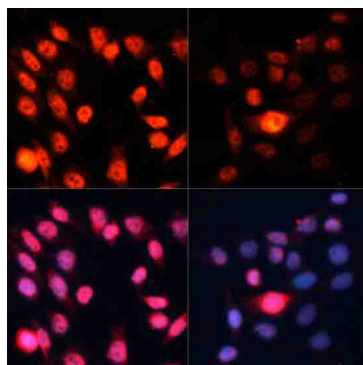
Blocking buffer: 3% nonfat dry milk in TBST.

Detection: ECL Basic Kit (RM00020).

Exposure time: 180s.



Immunofluorescence analysis of C6 cells using Phospho-p70 S6 Kinase 1-T389 Rabbit pAb (AP0564) at dilution of 1:100. C6 cells were treated with Serum-starvation overnight at 37°C.



Immunofluorescence analysis of HeLa cells using Phospho-p70 S6 Kinase 1-T389 Rabbit pAb (AP0564) at dilution of 1:100. HeLa cells were treated with Serum-starvation overnight at 37°C.