

AP0567

Leader in Biomolecular Solutions for Life Science



Phospho-PKCδ/θ-S643/676 Rabbit pAb

Catalog No.: AP0567

Basic Information

Observed MW

78kDa

Calculated MW

77kDa/80kDa/67kDa/74kDa/81kDa

Category

Polyclonal Antibody

Applications

WB, ELISA

Cross-Reactivity

Human, Mouse

Background

Protein kinase C (PKC) is a family of serine- and threonine-specific protein kinases that can be activated by calcium and the second messenger diacylglycerol. PKC family members phosphorylate a wide variety of protein targets and are known to be involved in diverse cellular signaling pathways. PKC family members also serve as major receptors for phorbol esters, a class of tumor promoters. Each member of the PKC family has a specific expression profile and is believed to play distinct roles in cells. The protein encoded by this gene is one of the PKC family members. Studies both in human and mice demonstrate that this kinase is involved in B cell signaling and in the regulation of growth, apoptosis, and differentiation of a variety of cell types. Alternatively spliced transcript variants encoding the same protein have been observed. [provided by RefSeq, Jul 2008]

Recommended Dilutions

WB 1:500 - 1:2000

ELISA Recommended starting concentration is 1 µg/mL. Please optimize the concentration based on your specific assay requirements.

Immunogen Information

Gene ID

5580/5588

Swiss Prot

Q05655/Q04759

Immunogen

Synthetic peptide. This information is considered to be commercially sensitive.

Synonyms

PRKCD/PRKCQ; Phospho-PKCδ/θ-S643/676

Contact

 www.abclonal.com

Product Information

Source

Rabbit

Isotype

IgG

Purification

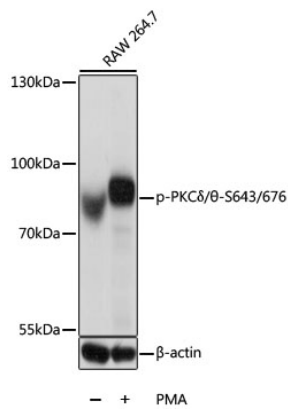
Affinity purification

Storage

Store at -20°C. Avoid freeze / thaw cycles.

Buffer: PBS with 0.02% sodium azide, 50% glycerol, pH7.3.

Validation Data



Western blot analysis of lysates from RAW264.7 cells, using Phospho-PKCδ/θ-S643/676 Rabbit pAb (AP0567) at 1:1000 dilution. RAW 264.7 cells were treated with PMA (200 nM) for 30 minutes .

Secondary antibody: HRP-conjugated Goat anti-Rabbit IgG (H+L) (AS014) at 1:10000 dilution.

Lysates/proteins: 25µg per lane.

Blocking buffer: 3% BSA.

Detection: ECL Basic Kit (RM00020).

Exposure time: 5s.