

AP0615

Leader in Biomolecular Solutions for Life Science



Phospho-PDGFR alpha-Y1018 Rabbit pAb

Catalog No.: AP0615

1 Publications

Basic Information

Observed MW

200kDa

Calculated MW

123kDa

Category

Polyclonal Antibody

Applications

WB,ELISA

Cross-Reactivity

Human

Background

This gene encodes a cell surface tyrosine kinase receptor for members of the platelet-derived growth factor family. These growth factors are mitogens for cells of mesenchymal origin. The identity of the growth factor bound to a receptor monomer determines whether the functional receptor is a homodimer or a heterodimer, composed of both platelet-derived growth factor receptor alpha and beta polypeptides. Studies suggest that this gene plays a role in organ development, wound healing, and tumor progression. Mutations in this gene have been associated with idiopathic hypereosinophilic syndrome, somatic and familial gastrointestinal stromal tumors, and a variety of other cancers.

Recommended Dilutions

WB 1:500 - 1:2000

ELISA Recommended starting concentration is 1 µg/mL. Please optimize the concentration based on your specific assay requirements.

Immunogen Information

Gene ID

5156

Swiss Prot

P16234

Immunogen

Synthetic peptide. This information is considered to be commercially sensitive.

Synonyms

CD140A; PDGFR2; PDGFR-2; Phospho-PDGFR alpha-Y1018

Contact



www.abclonal.com

Product Information

Source

Rabbit

Isotype

IgG

Purification

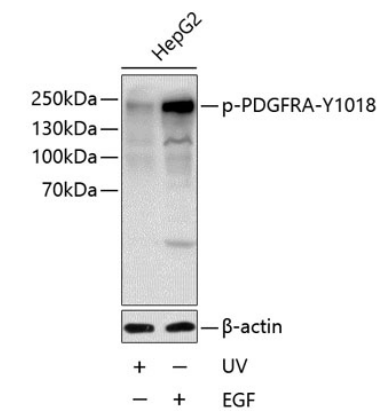
Affinity purification

Storage

Store at -20°C. Avoid freeze / thaw cycles.

Buffer: PBS with 0.02% sodium azide, 50% glycerol, pH7.3.

Validation Data



Western blot analysis of lysates from HepG2 cells, using Phospho-PDGFR alpha-Y1018 Rabbit pAb (AP0615) at 1:1000 dilution. HepG2 cells were treated with UV for 15-30 minutes or treated with EGF (100ng/mL) for 30 minutes after serum-starvation overnight.
Secondary antibody: HRP-conjugated Goat anti-Rabbit IgG (H+L) (AS014) at 1:10000 dilution.
Lysates/proteins: 25µg per lane.
Blocking buffer: 3% BSA.