

AP0749

Leader in Biomolecular Solutions for Life Science



Phospho-POLR2A CTD-S2 Rabbit pAb

Catalog No.: AP0749

3 Publications

Basic Information

Observed MW

260kDa

Calculated MW

217kDa

Category

Polyclonal Antibody

Applications

WB,IP,ELISA

Cross-Reactivity

Human

Background

This gene encodes the largest subunit of RNA polymerase II, the polymerase responsible for synthesizing messenger RNA in eukaryotes. The product of this gene contains a carboxy terminal domain composed of heptapeptide repeats that are essential for polymerase activity. These repeats contain serine and threonine residues that are phosphorylated in actively transcribing RNA polymerase. In addition, this subunit, in combination with several other polymerase subunits, forms the DNA binding domain of the polymerase, a groove in which the DNA template is transcribed into RNA.

Recommended Dilutions

WB 1:1000 - 1:2000

IP 0.5µg-4µg antibody for
200µg-400µg extracts
of whole cells

ELISA Recommended starting
concentration is 1
µg/mL. Please optimize
the concentration
based on your specific
assay requirements.

Immunogen Information

Gene ID

5430

Swiss Prot

P24928

Immunogen

Synthetic peptide. This information is considered to be commercially sensitive.

Synonyms

RPB1; RPO2; POLR2; POLRA; RPBh1; RPOL2; NEDHIB; RpIILS; hsRPB1; hRPB220;
Phospho-POLR2A CTD-S2

Product Information

Source

Rabbit

Isotype

IgG

Purification

Affinity purification

Storage

Store at -20°C. Avoid freeze / thaw cycles.

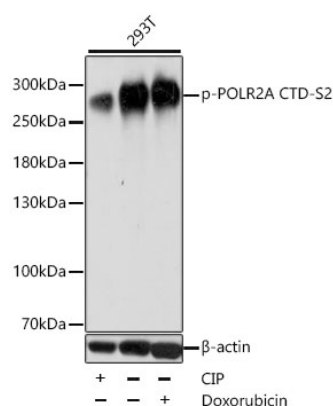
Buffer: PBS with 0.01% thimerosal, 50% glycerol, pH7.3.

Contact



www.abclonal.com

Validation Data



Western blot analysis of lysates from 293T cells, using Phospho-POLR2A CTD-S2 Rabbit pAb (AP0749) at 1:1000 dilution. 293T cell lysate were treated with CIP (20ul CIP for each 400ul cell lysate) at 37°C for 1 hour or treated with Doxorubicin (0.5uM) for 24 hours.

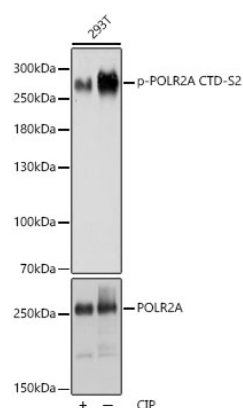
Secondary antibody: HRP-conjugated Goat anti-Rabbit IgG (H+L) (AS014) at 1:10000 dilution.

Lysates/proteins: 25µg per lane.

Blocking buffer: 3% BSA.

Detection: ECL Basic Kit (RM00020).

Exposure time: 1s.



Western blot analysis of lysates from 293T cells, using Phospho-POLR2A CTD-S2 Rabbit pAb (AP0749) at 1:1000 dilution or POLR2A antibody (A2107). 293T cells were treated with CIP(20uL/400ul) at 37°C for 1 hour.

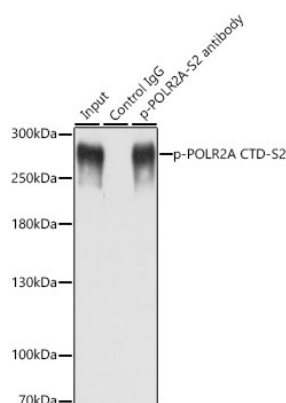
Secondary antibody: HRP-conjugated Goat anti-Rabbit IgG (H+L) (AS014) at 1:10000 dilution.

Lysates/proteins: 25µg per lane.

Blocking buffer: 3% BSA.

Detection: ECL Basic Kit (RM00020).

Exposure time: 1s.



Immunoprecipitation analysis of 200 µg extracts of MCF-7 cells, using 3 µg Phospho-POLR2A CTD-S2 antibody (AP0749). Western blot was performed from the immunoprecipitate using Phospho-POLR2A-S2 pAb (AP0749) at a dilution of 1:1000. MCF7 cells were treated with nocodazole (50 ng/mL) at 37°C for 20 hours.