

AP0828

Leader in Biomolecular Solutions for Life Science



Phospho-POLR2A CTD-S5 Rabbit pAb

Catalog No.: AP0828

2 Publications

Basic Information

Observed MW

270kDa

Calculated MW

217kDa

Category

Polyclonal Antibody

Applications

WB,IHC-P,ELISA

Cross-Reactivity

Human,Mouse,Rat

Background

This gene encodes the largest subunit of RNA polymerase II, the polymerase responsible for synthesizing messenger RNA in eukaryotes. The product of this gene contains a carboxy terminal domain composed of heptapeptide repeats that are essential for polymerase activity. These repeats contain serine and threonine residues that are phosphorylated in actively transcribing RNA polymerase. In addition, this subunit, in combination with several other polymerase subunits, forms the DNA binding domain of the polymerase, a groove in which the DNA template is transcribed into RNA.

Recommended Dilutions

WB 1:500 - 1:1000

IHC-P 1:50 - 1:100

ELISA Recommended starting concentration is 1 µg/mL. Please optimize the concentration based on your specific assay requirements.

Immunogen Information

Gene ID

5430

Swiss Prot

P24928

Immunogen

Synthetic peptide. This information is considered to be commercially sensitive.

Synonyms

RPB1; RPO2; POLR2; POLRA; RPBh1; RPOL2; NEDHIB; RpIILS; hsRPB1; hRPB220; Phospho-POLR2A CTD-S5

Contact

 www.abclonal.com

Product Information

Source

Rabbit

Isotype

IgG

Purification

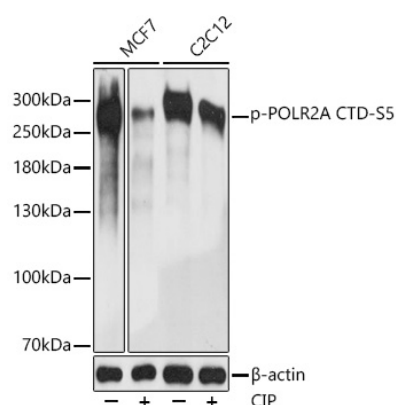
Affinity purification

Storage

Store at -20°C. Avoid freeze / thaw cycles.

Buffer: PBS with 0.05% proclin300,50% glycerol,pH7.3.

Validation Data



Western blot analysis of various lysates using Phospho-POLR2A CTD-S5 Rabbit pAb (AP0828) at 1:1000 dilution. MCF7 and C2C12 cells were treated by CIP(20uL/400ul) at 37°C for 1 hour.

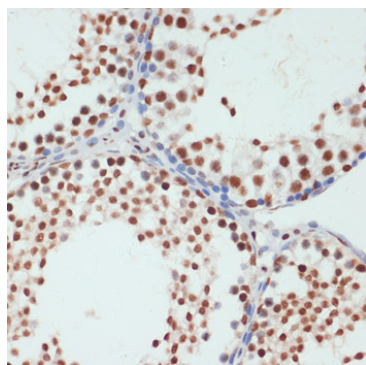
Secondary antibody: HRP-conjugated Goat anti-Rabbit IgG (H+L) (AS014) at 1:10000 dilution.

Lysates/proteins: 25µg per lane.

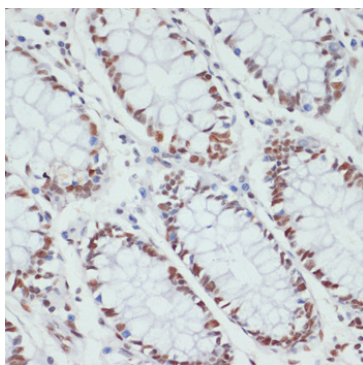
Blocking buffer: 3% nonfat dry milk in TBST.

Detection: ECL Basic Kit (RM00020).

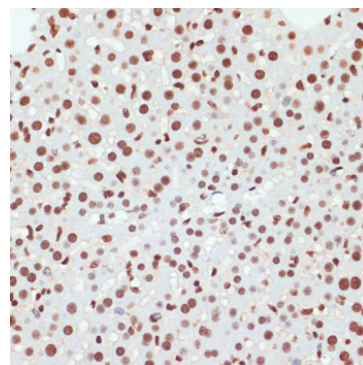
Exposure time: 1s.



Immunohistochemistry analysis of paraffin-embedded Rat testis using Phospho-POLR2A CTD-S5 Rabbit pAb (AP0828) at dilution of 1:100 (40x lens). Microwave antigen retrieval performed with 0.01M Tris/EDTA Buffer (pH 9.0) prior to IHC staining.



Immunohistochemistry analysis of paraffin-embedded Human colon using Phospho-POLR2A CTD-S5 Rabbit pAb (AP0828) at dilution of 1:100 (40x lens). Microwave antigen retrieval performed with 0.01M Tris/EDTA Buffer (pH 9.0) prior to IHC staining.



Immunohistochemistry analysis of paraffin-embedded Mouse liver using Phospho-POLR2A CTD-S5 Rabbit pAb (AP0828) at dilution of 1:100 (40x lens). Microwave antigen retrieval performed with 0.01M Tris/EDTA Buffer (pH 9.0) prior to IHC staining.