

AP0853

Leader in Biomolecular Solutions for Life Science



Phospho-HSL-S660 Rabbit pAb

Catalog No.: AP0853

4 Publications

Basic Information

Observed MW

81kDa

Calculated MW

117kDa

Category

Polyclonal Antibody

Applications

WB, ELISA

Cross-Reactivity

Human, Mouse

Background

The protein encoded by this gene has a long and a short form, generated by use of alternative translational start codons. The long form is expressed in steroidogenic tissues such as testis, where it converts cholesteryl esters to free cholesterol for steroid hormone production. The short form is expressed in adipose tissue, among others, where it hydrolyzes stored triglycerides to free fatty acids.

Recommended Dilutions

WB 1:500 - 1:1000

ELISA Recommended starting concentration is 1 µg/mL. Please optimize the concentration based on your specific assay requirements.

Immunogen Information

Gene ID
3991

Swiss Prot
Q05469

Immunogen

Synthetic peptide. This information is considered to be commercially sensitive.

Synonyms

HSL; LHS; REH; AOMS4; FPLD6; Phospho-HSL-S660

Contact

 www.abclonal.com

Product Information

Source
Rabbit

Isotype
IgG

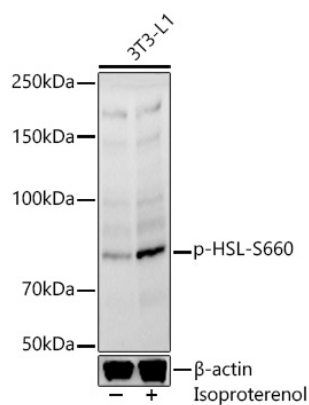
Purification
Affinity purification

Storage

Store at -20°C. Avoid freeze / thaw cycles.

Buffer: PBS containing 50% glycerol, preserved with proclin300 or sodium azide (as specified on the Certificate of Analysis), pH 7.3.

Validation Data



Western blot analysis of lysates from 3T3-L1 cells, using Phospho-HSL-S660 Rabbit pAb (AP0853) at 1:600 dilution. 3T3-L1 cells were treated with Isoproterenol (10 μ M for 20 min) at 37°C.

Secondary antibody: HRP-conjugated Goat anti-Rabbit IgG (H+L) (AS014) at 1:10000 dilution.

Lysates/proteins: 25 μ g per lane.

Blocking buffer: 3% nonfat dry milk in TBST.

Detection: ECL Basic Kit (RM00020).

Exposure time: 30s.