

AP0938

Leader in Biomolecular Solutions for Life Science



Phospho-SMO-S616 Rabbit pAb

Catalog No.: AP0938

Basic Information

Observed MW

Refer to figures

Calculated MW

86kDa

Category

Polyclonal Antibody

Applications

WB,ELISA,DB

Cross-Reactivity

Human

Background

The protein encoded by this gene is a G protein-coupled receptor that interacts with the patched protein, a receptor for hedgehog proteins. The encoded protein transduces signals to other proteins after activation by a hedgehog protein/patched protein complex.

Recommended Dilutions

WB 1:500 - 1:1000

DB 1:500 - 1:1000

ELISA Recommended starting concentration is 1 µg/mL. Please optimize the concentration based on your specific assay requirements.

Immunogen Information

Gene ID
6608

Swiss Prot
Q99835

Immunogen

Synthetic peptide. This information is considered to be commercially sensitive.

Synonyms

Gx; CRJS; PHLS; SMOH; FZD11; Phospho-SMO-S616

Contact

 www.abclonal.com

Product Information

Source
Rabbit

Isotype
IgG

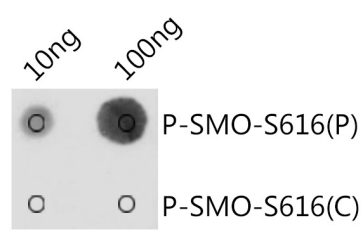
Purification
Affinity purification

Storage

Store at -20°C. Avoid freeze / thaw cycles.

Buffer: PBS with 0.01% thimerosal, 50% glycerol, pH7.3.

Validation Data



Dot-blot analysis of all sorts of peptides using Phospho-SMO-S616 antibody (AP0938) at 1:1000 dilution. Exposure time: 1s.