

AP0939

Leader in Biomolecular Solutions for Life Science



# Phospho-SMO-S611/615 Rabbit pAb

Catalog No.: AP0939

## Basic Information

### Observed MW

86kDa

### Calculated MW

86kDa

### Category

Polyclonal Antibody

### Applications

WB, ELISA

### Cross-Reactivity

Human

## Background

The protein encoded by this gene is a G protein-coupled receptor that interacts with the patched protein, a receptor for hedgehog proteins. The encoded protein transduces signals to other proteins after activation by a hedgehog protein/patched protein complex.

## Recommended Dilutions

**WB** 1:500 - 1:1000

**ELISA** Recommended starting concentration is 1 µg/mL. Please optimize the concentration based on your specific assay requirements.

## Immunogen Information

**Gene ID**  
6608

**Swiss Prot**  
Q99835

### Immunogen

Synthetic peptide. This information is considered to be commercially sensitive.

### Synonyms

Gx; CRJS; PHLS; SMOH; FZD11; Phospho-SMO-S611/615

## Contact

 [www.abclonal.com](http://www.abclonal.com)

## Product Information

**Source**  
Rabbit

**Isotype**  
IgG

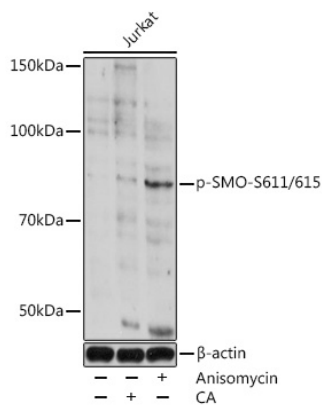
**Purification**  
Affinity purification

### Storage

Store at -20°C. Avoid freeze / thaw cycles.

Buffer: PBS with 0.01% thimerosal, 50% glycerol, pH7.3.

# Validation Data



Western blot analysis of lysates from Jurkat cells, using Phospho-SMO-S611/615 Rabbit pAb (AP0939) at 1:1000 dilution. Jurkat cells were treated with Calyculin A (100 nM) at 37°C for 30 minutes. Jurkat cells were treated with Anisomycin (25 µg/mL) at 37°C for 20 minutes.

Secondary antibody: HRP-conjugated Goat anti-Rabbit IgG (H+L) (AS014) at 1:10000 dilution.

Lysates/proteins: 25µg per lane.

Blocking buffer: 3% BSA.

Detection: ECL Basic Kit (RM00020).

Exposure time: 60s.