

AP0940

Leader in Biomolecular Solutions for Life Science



Phospho-SMO-S611/615/616 Rabbit pAb

Catalog No.: AP0940

Basic Information

Observed MW

80kDa

Calculated MW

86kDa

Category

Polyclonal Antibody

Applications

WB, ELISA

Cross-Reactivity

Human

Background

The protein encoded by this gene is a G protein-coupled receptor that interacts with the patched protein, a receptor for hedgehog proteins. The encoded protein transduces signals to other proteins after activation by a hedgehog protein/patched protein complex.

Recommended Dilutions

WB 1:500 - 1:1000

ELISA Recommended starting concentration is 1 µg/mL. Please optimize the concentration based on your specific assay requirements.

Immunogen Information

Gene ID
6608

Swiss Prot
Q99835

Immunogen

Synthetic peptide. This information is considered to be commercially sensitive.

Synonyms

Gx; CRJS; PHLS; SMOH; FZD11; Phospho-SMO-S611/615/616

Contact

 www.abclonal.com

Product Information

Source
Rabbit

Isotype
IgG

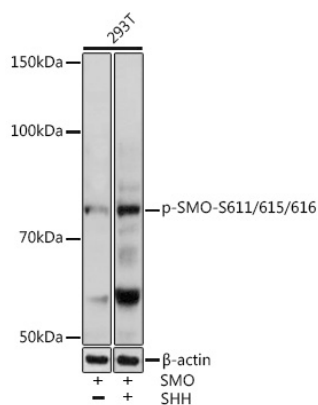
Purification
Affinity purification

Storage

Store at -20°C. Avoid freeze / thaw cycles.

Buffer: PBS containing 50% glycerol, preserved with proclin300 or sodium azide (as specified on the Certificate of Analysis), pH 7.3.

Validation Data



Western blot analysis of lysates from 293T cells, using Phospho-SMO-S611/615/616 Rabbit pAb (AP0940) at 1:1000 dilution. 293T-SMO cells were treated with SHH (0.4µg/mL) at 37°C after serum-starvation overnight. Secondary antibody: HRP-conjugated Goat anti-Rabbit IgG (H+L) (AS014) at 1:10000 dilution. Lysates/proteins: 25µg per lane. Blocking buffer: 3% BSA. Detection: ECL Enhanced Kit (RM00021). Exposure time: 1min.