

AP0943

Leader in Biomolecular Solutions for Life Science



# Phospho-MCL1-T163 Rabbit pAb

Catalog No.: AP0943

## Basic Information

### Observed MW

41kDa

### Calculated MW

37kDa

### Category

Polyclonal Antibody

### Applications

WB,ELISA

### Cross-Reactivity

Human,Mouse

## Background

This gene encodes an anti-apoptotic protein, which is a member of the Bcl-2 family. Alternative splicing results in multiple transcript variants. The longest gene product (isoform 1) enhances cell survival by inhibiting apoptosis while the alternatively spliced shorter gene products (isoform 2 and isoform 3) promote apoptosis and are death-inducing.

## Recommended Dilutions

**WB** 1:500 - 1:2000

**ELISA** Recommended starting concentration is 1 µg/mL. Please optimize the concentration based on your specific assay requirements.

## Immunogen Information

### Gene ID

4170

### Swiss Prot

Q07820

### Immunogen

Synthetic peptide. This information is considered to be commercially sensitive.

### Synonyms

TM; EAT; MCL1L; MCL1S; Mcl-1; BCL2L3; MCL1-ES; bcl2-L-3; mcl1/EAT; Phospho-MCL1-T163

## Contact

 [www.abclonal.com](http://www.abclonal.com)

## Product Information

### Source

Rabbit

### Isotype

IgG

### Purification

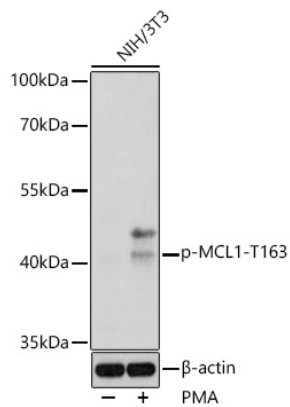
Affinity purification

### Storage

Store at -20°C. Avoid freeze / thaw cycles.

Buffer: PBS with 0.01% thimerosal, 50% glycerol, pH7.3.

## Validation Data



Western blot analysis of lysates from NIH/3T3 cells, using Phospho-MCL1-T163 Rabbit pAb (AP0943) at 1:1000 dilution. NIH/3T3 cells were treated with PMA (80 nM) for overnight.

Secondary antibody: HRP-conjugated Goat anti-Rabbit IgG (H+L) (AS014) at 1:10000 dilution.

Lysates/proteins: 25µg per lane.

Blocking buffer: 3% BSA.

Detection: ECL Basic Kit (RM00020).

Exposure time: 30s.