

AP0956

Leader in Biomolecular Solutions for Life Science



## Phospho-PLN-S16/T17 Rabbit pAb

Catalog No.: AP0956

### Basic Information

#### Observed MW

13kDa/17kDa

#### Calculated MW

6kDa

#### Category

Polyclonal Antibody

#### Applications

WB, ELISA

#### Cross-Reactivity

Human, Mouse, Rat

### Background

The protein encoded by this gene is found as a pentamer and is a major substrate for the cAMP-dependent protein kinase in cardiac muscle. The encoded protein is an inhibitor of cardiac muscle sarcoplasmic reticulum  $\text{Ca}^{2+}$ -ATPase in the unphosphorylated state, but inhibition is relieved upon phosphorylation of the protein. The subsequent activation of the  $\text{Ca}^{2+}$  pump leads to enhanced muscle relaxation rates, thereby contributing to the inotropic response elicited in heart by beta-agonists. The encoded protein is a key regulator of cardiac diastolic function. Mutations in this gene are a cause of inherited human dilated cardiomyopathy with refractory congestive heart failure, and also familial hypertrophic cardiomyopathy.

### Recommended Dilutions

**WB** 1:500 - 1:1000

**ELISA** Recommended starting concentration is 1  $\mu\text{g/mL}$ . Please optimize the concentration based on your specific assay requirements.

### Immunogen Information

#### Gene ID

5350

#### Swiss Prot

P26678

#### Immunogen

Synthetic peptide. This information is considered to be commercially sensitive.

#### Synonyms

PLB; CMD1P; CMH18; Phospho-PLN-S16/T17

### Contact



[www.abclonal.com](http://www.abclonal.com)

### Product Information

#### Source

Rabbit

#### Isotype

IgG

#### Purification

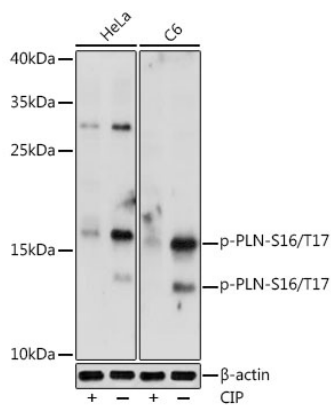
Affinity purification

#### Storage

Store at  $-20^{\circ}\text{C}$ . Avoid freeze / thaw cycles.

Buffer: PBS with 0.01% thimerosal, 50% glycerol, pH 7.3.

# Validation Data



Western blot analysis of various lysates using Phospho-PLN-S16/T17 Rabbit pAb (AP0956) at 1:1000 dilution. HeLa cells and C6 cells were treated by CIP(20uL/400ul) at 37°C for 1 hour.  
Secondary antibody: HRP-conjugated Goat anti-Rabbit IgG (H+L) (AS014) at 1:10000 dilution.  
Lysates/proteins: 25µg per lane.  
Blocking buffer: 3% nonfat dry milk in TBST.  
Detection: ECL Basic Kit (RM00020).  
Exposure time: 10s.