

AP0968

Leader in Biomolecular Solutions for Life Science



Phospho-PLA2G4A-S505 Rabbit pAb

Catalog No.: AP0968

1 Publications

Basic Information

Observed MW

Refer to figures

Calculated MW

85kDa

Category

Polyclonal Antibody

Applications

WB, ELISA

Cross-Reactivity

Human, Mouse, Rat

Background

This gene encodes a member of the cytosolic phospholipase A2 group IV family. The enzyme catalyzes the hydrolysis of membrane phospholipids to release arachidonic acid which is subsequently metabolized into eicosanoids. Eicosanoids, including prostaglandins and leukotrienes, are lipid-based cellular hormones that regulate hemodynamics, inflammatory responses, and other intracellular pathways. The hydrolysis reaction also produces lysophospholipids that are converted into platelet-activating factor. The enzyme is activated by increased intracellular Ca^{2+} levels and phosphorylation, resulting in its translocation from the cytosol and nucleus to perinuclear membrane vesicles. Alternative splicing results in multiple transcript variants.

Recommended Dilutions

WB 1:500 - 1:2000

ELISA Recommended starting concentration is 1 μ g/mL. Please optimize the concentration based on your specific assay requirements.

Immunogen Information

Gene ID

5321

Swiss Prot

P47712

Immunogen

Synthetic peptide. This information is considered to be commercially sensitive.

Synonyms

GURDP; cPLA2; PLA2G4; cPLA2-alpha; Phospho-PLA2G4A-S505

Contact



www.abclonal.com

Product Information

Source

Rabbit

Isotype

IgG

Purification

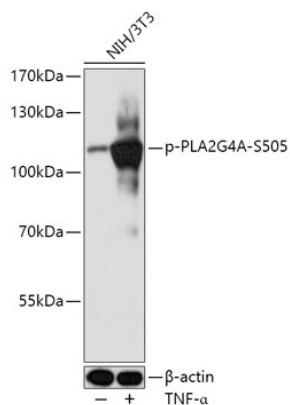
Affinity purification

Storage

Store at -20°C . Avoid freeze / thaw cycles.

Buffer: PBS with 0.01% thimerosal, 50% glycerol, pH7.3.

Validation Data



Western blot analysis of lysates from NIH/3T3 cells, using Phospho-PLA2G4A-S505 Rabbit pAb (AP0968) at 1:1000 dilution. NIH/3T3 cells were treated with TNF- α (20 ng/mL) at 37°C for 30 minutes.

Secondary antibody: HRP-conjugated Goat anti-Rabbit IgG (H+L) (AS014) at 1:10000 dilution.

Lysates/proteins: 25 μ g per lane.

Blocking buffer: 3% BSA.

Detection: ECL Basic Kit (RM00020).

Exposure time: 10s.