

AP1002

Leader in Biomolecular Solutions for Life Science



Phospho-AMPK α 1-S496 Rabbit mAb

Catalog No.: AP1002

Recombinant

32 Publications

Basic Information

Observed MW

64kDa

Calculated MW

64kDa

Category

SMab Recombinant Monoclonal
Antibody

Applications

WB,ELISA

Cross-Reactivity

Mouse

CloneNo number

ARC1547

Background

The protein encoded by this gene belongs to the ser/thr protein kinase family. It is the catalytic subunit of the 5'-prime-AMP-activated protein kinase (AMPK). AMPK is a cellular energy sensor conserved in all eukaryotic cells. The kinase activity of AMPK is activated by the stimuli that increase the cellular AMP/ATP ratio. AMPK regulates the activities of a number of key metabolic enzymes through phosphorylation. It protects cells from stresses that cause ATP depletion by switching off ATP-consuming biosynthetic pathways. Alternatively spliced transcript variants encoding distinct isoforms have been observed.

Recommended Dilutions

WB 1:500 - 1:2000

ELISA Recommended starting concentration is 1 μ g/mL. Please optimize the concentration based on your specific assay requirements.

Immunogen Information

Gene ID
5562

Swiss Prot
Q13131

Immunogen

Synthetic peptide. This information is considered to be commercially sensitive.

Synonyms

AMPK; AMPK α 1; AMPK alpha 1; Phospho-AMPK α 1-S496

Contact

 www.abclonal.com

Product Information

Source
Rabbit

Isotype
IgG

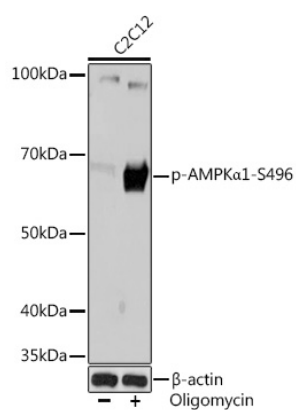
Purification
Affinity purification

Storage

Store at -20°C. Avoid freeze / thaw cycles.

Buffer: PBS with 0.02% sodium azide,0.05% BSA,50% glycerol,pH7.3.

Validation Data



Western blot analysis of lysates from C2C12 cells, using Phospho-AMPKα1-S496 Rabbit mAb (AP1002) at 1:1000 dilution. C2C12 cells were treated with oligomycin (0.5 μM) at 37°C for 30 minutes.

Secondary antibody: HRP-conjugated Goat anti-Rabbit IgG (H+L) (AS014) at 1:10000 dilution.

Lysates/proteins: 25 μg per lane.

Blocking buffer: 3% BSA.

Detection: ECL Basic Kit (RM00020).

Exposure time: 3 min.