

AP1003

Leader in Biomolecular Solutions for Life Science



Phospho-c-Jun-T91 Rabbit mAb

Catalog No.: AP1003

Recombinant

1 Publications

Basic Information

Observed MW

48kDa

Calculated MW

36kDa

Category

SMab Recombinant Monoclonal
Antibody

Applications

WB,IHC-P,ELISA

Cross-Reactivity

Human,Mouse

CloneNo number

ARC1548

Background

This gene is the putative transforming gene of avian sarcoma virus 17. It encodes a protein which is highly similar to the viral protein, and which interacts directly with specific target DNA sequences to regulate gene expression. This gene is intronless and is mapped to 1p32-p31, a chromosomal region involved in both translocations and deletions in human malignancies.

Recommended Dilutions

WB 1:500 - 1:2000

IHC-P 1:50 - 1:200

ELISA Recommended starting concentration is 1 µg/mL. Please optimize the concentration based on your specific assay requirements.

Immunogen Information

Gene ID

3725

Swiss Prot

P05412

Immunogen

Synthetic peptide. This information is considered to be commercially sensitive.

Synonyms

AP1; p39; AP-1; cJUN; c-Jun; Phospho-c-Jun-T91

Contact



www.abclonal.com

Product Information

Source

Rabbit

Isotype

IgG

Purification

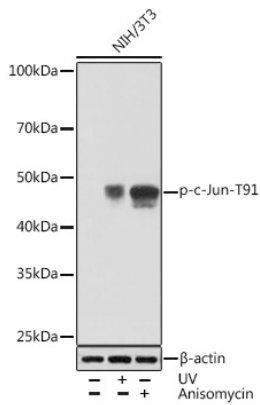
Affinity purification

Storage

Store at -20°C. Avoid freeze / thaw cycles.

Buffer: PBS with 0.02% sodium azide,0.05% BSA,50% glycerol,pH7.3.

Validation Data



Western blot analysis of lysates from NIH/3T3 cells, using Phospho-c-Jun-T91 Rabbit mAb (AP1003) at 1:1000 dilution. NIH/3T3 cells were treated with UV at room temperature for 15-30 minutes or treated with Anisomycin (25 µg/mL) at 37°C for 30 minutes.

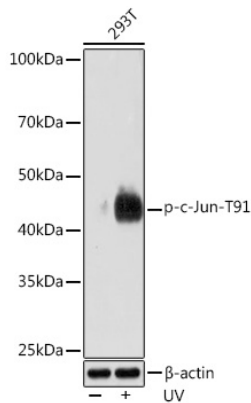
Secondary antibody: HRP-conjugated Goat anti-Rabbit IgG (H+L) (AS014) at 1:10000 dilution.

Lysates/proteins: 25µg per lane.

Blocking buffer: 3% BSA.

Detection: ECL Basic Kit (RM00020).

Exposure time: 30s.



Western blot analysis of lysates from 293T cells, using Phospho-c-Jun-T91 Rabbit mAb (AP1003) at 1:1000 dilution. 293T cells were treated with UV at room temperature for 15-30 minutes.

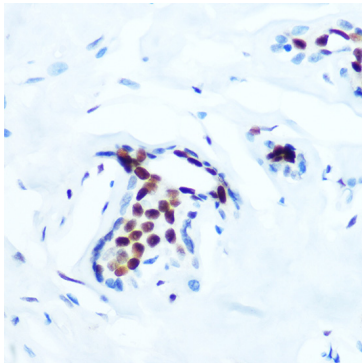
Secondary antibody: HRP-conjugated Goat anti-Rabbit IgG (H+L) (AS014) at 1:10000 dilution.

Lysates/proteins: 25µg per lane.

Blocking buffer: 3% BSA.

Detection: ECL Enhanced Kit (RM00021).

Exposure time: 3min.



Immunohistochemistry analysis of paraffin-embedded Human breast using Phospho-c-Jun-T91 Rabbit mAb (AP1003) at dilution of 1:100 (40x lens). Microwave antigen retrieval performed with 0.01M Tris/EDTA Buffer (pH 9.0) prior to IHC staining.