

AP1005

Leader in Biomolecular Solutions for Life Science



Phospho-CDK2-Y15 Rabbit mAb

Catalog No.: AP1005

Recombinant

1 Publications

Basic Information

Observed MW

34kDa

Calculated MW

34kDa

Category

SMab Recombinant Monoclonal
Antibody

Applications

WB,ELISA

Cross-Reactivity

Mouse

CloneNo number

ARC1550

Recommended Dilutions

WB 1:500 - 1:1000

ELISA Recommended starting concentration is 1 µg/mL. Please optimize the concentration based on your specific assay requirements.

Contact

 www.abclonal.com

Background

This gene encodes a member of a family of serine/threonine protein kinases that participate in cell cycle regulation. The encoded protein is the catalytic subunit of the cyclin-dependent protein kinase complex, which regulates progression through the cell cycle. Activity of this protein is especially critical during the G1 to S phase transition. This protein associates with and regulated by other subunits of the complex including cyclin A or E, CDK inhibitor p21Cip1 (CDKN1A), and p27Kip1 (CDKN1B). Alternative splicing results in multiple transcript variants.

Immunogen Information

Gene ID
1017

Swiss Prot
P24941

Immunogen

Synthetic peptide. This information is considered to be commercially sensitive.

Synonyms

CDKN2; p33(CDK2); Phospho-CDK2-Y15

Product Information

Source
Rabbit

Isotype
IgG

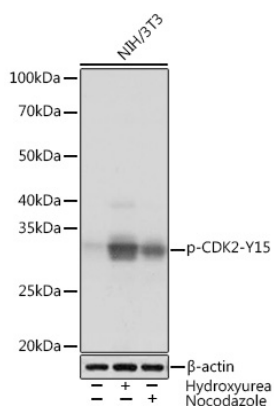
Purification
Affinity purification

Storage

Store at -20°C. Avoid freeze / thaw cycles.

Buffer: PBS with 0.02% sodium azide,0.05% BSA,50% glycerol,pH7.3.

Validation Data



Western blot analysis of lysates from NIH/3T3 cells, using Phospho-CDK2-Y15 Rabbit mAb (AP1005) at 1:1000 dilution. NIH/3T3 cells were treated with Hydroxyurea (4 Mm) at 37°C for 20 hours or treated with Nocodazole (100 ng/mL) at 37°C for 24 hours. Secondary antibody: HRP-conjugated Goat anti-Rabbit IgG (H+L) (AS014) at 1:10000 dilution.

Lysates/proteins: 25µg per lane.

Blocking buffer: 3% BSA.

Detection: ECL Basic Kit (RM00020).

Exposure time: 3s.