

AP1025

Leader in Biomolecular Solutions for Life Science



# Phospho-PLK1-T210 Rabbit mAb

Catalog No.: AP1025

Recombinant

1 Publications

## Basic Information

### Observed MW

68kDa

### Calculated MW

68kDa

### Category

SMab Recombinant Monoclonal  
Antibody

### Applications

WB,ELISA

### Cross-Reactivity

Human

### CloneNo number

ARC1570

## Background

The Ser/Thr protein kinase encoded by this gene belongs to the CDC5/Polo subfamily. It is highly expressed during mitosis and elevated levels are found in many different types of cancer. Depletion of this protein in cancer cells dramatically inhibited cell proliferation and induced apoptosis; hence, it is a target for cancer therapy.

## Recommended Dilutions

**WB** 1:500 - 1:1000

**ELISA** Recommended starting concentration is 1 µg/mL. Please optimize the concentration based on your specific assay requirements.

## Immunogen Information

### Gene ID

5347

### Swiss Prot

P53350

### Immunogen

Synthetic peptide. This information is considered to be commercially sensitive.

### Synonyms

PLK; STPK13; Phospho-PLK1-T210

## Contact

 [www.abclonal.com](http://www.abclonal.com)

## Product Information

### Source

Rabbit

### Isotype

IgG

### Purification

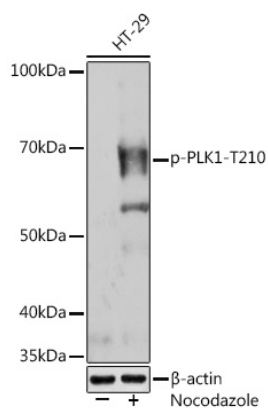
Affinity purification

### Storage

Store at -20°C. Avoid freeze / thaw cycles.

Buffer: PBS with 0.02% sodium azide,0.05% BSA,50% glycerol,pH7.3.

## Validation Data



Western blot analysis of lysates from HT-29 cells, using Phospho-PLK1-T210 (AP1025) at 1:1000 dilution. HT-29 cells were treated with nocodazole (100 ng/mL) at 37°C for 16 hours.

Secondary antibody: HRP-conjugated Goat anti-Rabbit IgG (H+L) (AS014) at 1:10000 dilution.

Lysates/proteins: 25µg per lane.

Blocking buffer: 3% BSA.

Detection: ECL Enhanced Kit (RM00021).

Exposure time: 3min.